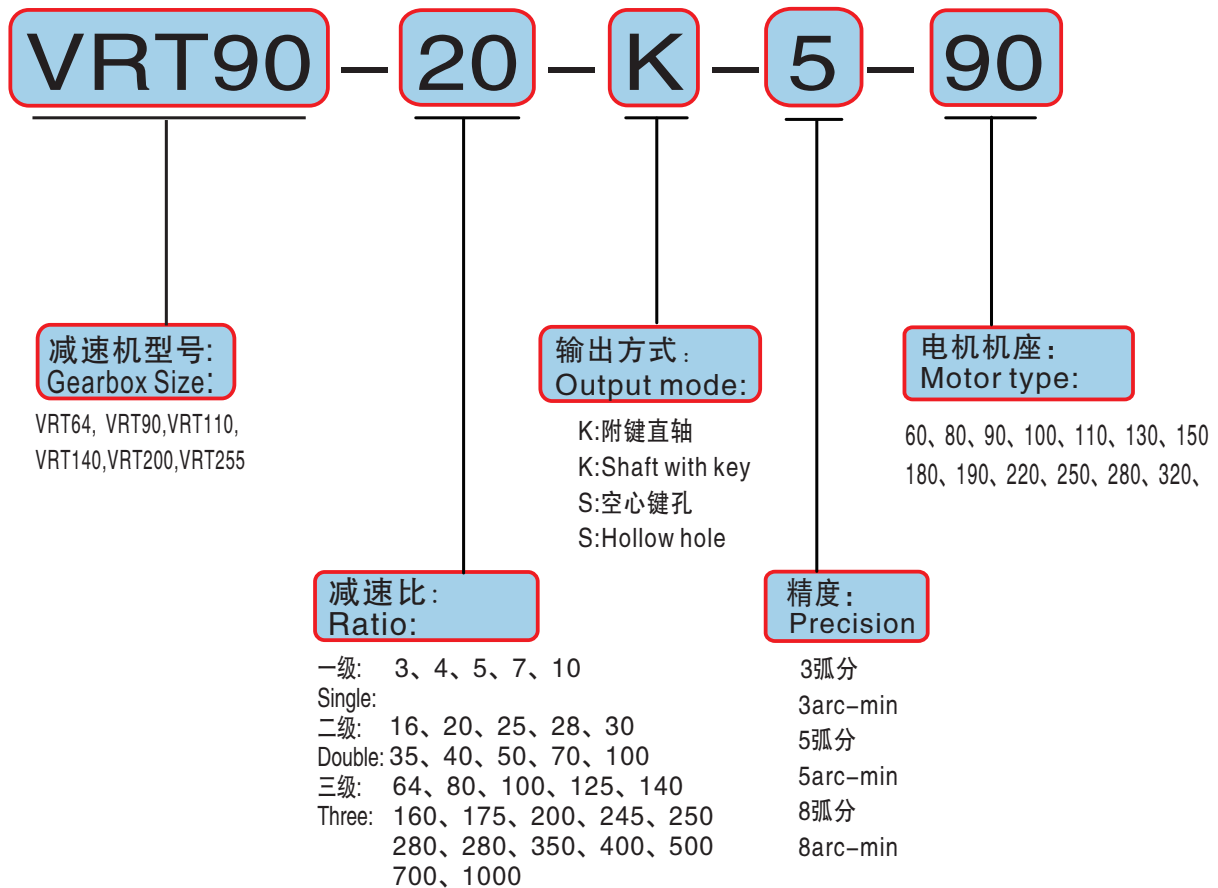


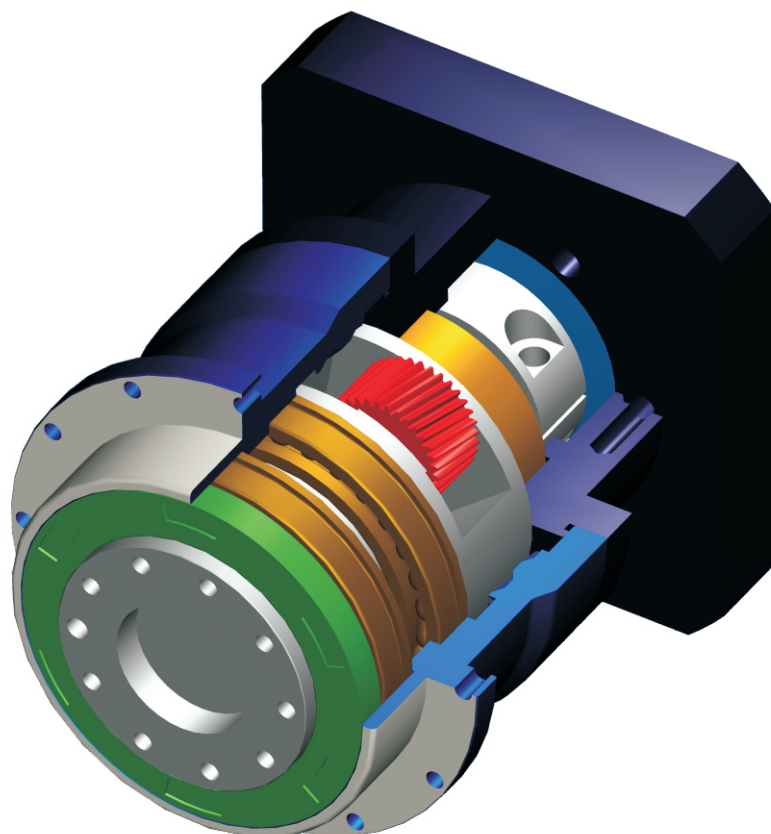
订货型号表示： Ordering representation



减速机工况应用选择表 Application selection of gear reducer						
使用系数(fs) Use coefficient(fs)						
负载类型 Load type	每小时启动次数Z Start times per hour Z	每日运行时间(h) Daily running time(h)				
		h≤4	4≤h≤8	8≤h≤12	12≤h≤16	16≤h≤24
平稳负载 Steady load	Z≤10	0.9	1.0	1.1	1.4	1.8
	10≤Z≤30	1.0	1.2	1.3	1.6	2.0
	30≤Z≤100	1.2	1.4	1.5	1.8	2.2
中等冲击负载 Medium impact load	Z≤10	1.2	1.4	1.5	1.8	2.2
	10≤Z≤30	1.4	1.6	1.65	2.0	2.5
	30≤Z≤100	1.6	1.8	2.0	2.2	2.8
冲击重载 Shock Overload	Z≤10	1.6	1.8	2.0	2.2	2.8
	10≤Z≤30	1.8	2.0	2.2	2.4	3.0
	30≤Z≤100	2.0	2.3	2.5	2.7	3.3

注：输出惯性大时,请加大一个型号选用；连续运转时工作寿命将降低一半。
 Note: The output inertia is large, please increase the selection of a model;
 Continuous operation working life will be reduced by half.

VRT系列行星减速机 VRT series planetary reducer



产品特点：高精度、承载能大、速比多、寿命长、噪音小、免维护。
Product features: High precision, high bearing capacity, high speed ratio, Long life, low noise, maintenance free.

输入种类：交流伺服马达、直流伺服马达、步进马达。
Type: AC servo motor, DC servo motor, stepping motor.

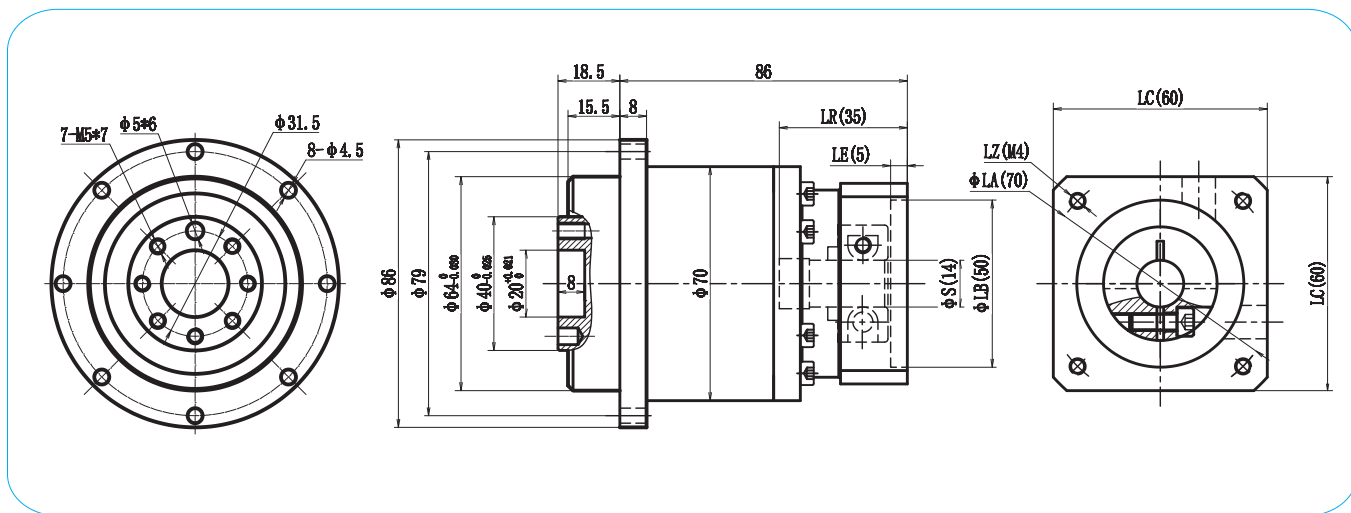
应用领域：机床、军工、新能源设备、工业机器人、印刷设备、自动组装机、等高精度场合的应用。
Application fields: Machine tools, military industry, newenergy equipment, industrial robots, printing equipment, automatic assembly line, and other high precision applications.

减速机性能参数 Gear performance parameters

规格 Specifications	单位 Unit	级数 Series	速比 Ratio	VRT64	VRT90	VRT110	VRT140	VRT200	VRT255
额定承受扭矩 T2N Rated torque T2B	Nm	L1	4	52	165	320	650	1650	2650
			5	52	165	320	650	1650	2650
			7	36	120	210	500	1250	1850
			10	18	75	165	320	700	1150
		L2	16	52	165	320	650	1650	2650
			20	52	165	320	650	1650	2650
			25	52	165	320	650	1650	2650
			28	52	165	320	650	1650	2650
			35	52	165	320	650	1650	2650
			40	52	165	320	650	1650	2650
			50	52	165	320	650	1650	2650
			70	36	120	210	500	1250	1850
			100	18	75	165	320	700	1150
			L3	64	52	165	320	650	1650
		80		52	165	320	650	1650	2650
		100		52	165	320	650	1650	2650
		112		52	165	320	650	1650	2650
		125		52	165	320	650	1650	2650
		140		52	165	320	650	1650	2650
		150		52	165	320	650	1650	2650
		160		52	165	320	650	1650	2650
		175		52	165	320	650	1650	2650
		196		52	165	320	650	1650	2650
		200		52	165	320	650	1650	2650
		245		52	165	320	650	1650	2650
		250		52	165	320	650	1650	2650
		280		52	165	320	650	1650	2650
		343		38	120	210	500	1250	1850
		350		52	165	320	650	1650	2650
		400		52	165	320	650	1650	2650
		490		36	120	210	500	1250	1850
		500	52	165	320	650	1650	2650	
700	38	120	210	500	1250	1850			
1000	18	75	165	320	700	1150			
最大承受扭矩T2B Maximum torque T2B	Nm	L1 L2 L3	3-1000	2.0倍额定输出扭矩 2.0 times the rated output torque					
额定输入转数n1N Rated speed n1N	R/min	L1 L2 L3	3-1000	3000	3000	3000	2000	2000	2000
背隙 Back clearance	arcmin	L1	3-10	≤3	≤3	≤3	≤3	≤3	≤3
		L2	12-100	≤6	≤6	≤6	≤6	≤6	≤6
		L3	64-1000	≤9	≤9	≤9	≤9	≤9	≤9
容许径向力F1 Allowable radial force	N	L1 L2 L3	3-1000	500	500	1000	3000	5000	8000
容许轴向力F2 Allowable axial force	N	L1 L2 L3	3-1000	300	500	1000	2000	8000	20000
效率 η Efficiency	%	L1	3-10	97%	97%	97%	97%	97%	97%
		L2	9-100	94%	94%	94%	94%	94%	94%
		L3	64-1000	91%	91%	91%	91%	91%	91%
重量 Weight	kg	L1	3-10	1.3	3.6	7.5	16.0	28.0	48.0
		L2	9-100	1.5	4.2	9.5	20.0	32.0	60.0
		L3	64-1000	1.8	4.8	11.5	24.0	36.0	72.0
噪音 Noise	DB	L1 L2 L3	3-1000	≤55	≤55	≤60	≤70	≤70	≤75

VRT64外形图

VRT64 Appearance Figure

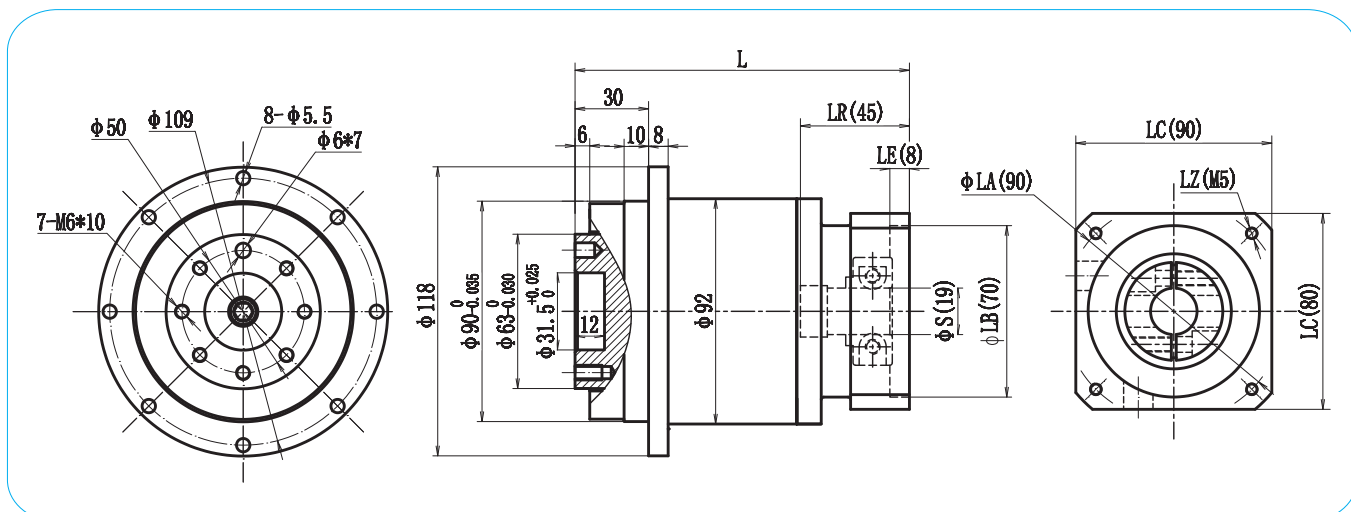


电机机座 Motor frame	LA	LZ	S	LB	LR	LE	LC	级数 Series		
								L1	L2	L3
40	45	4-M3	8	30	25	5	40	62.5	86	106
60	70	4-M4	11/14	50	30	5	60	62.5	86	106



VRT90外形图

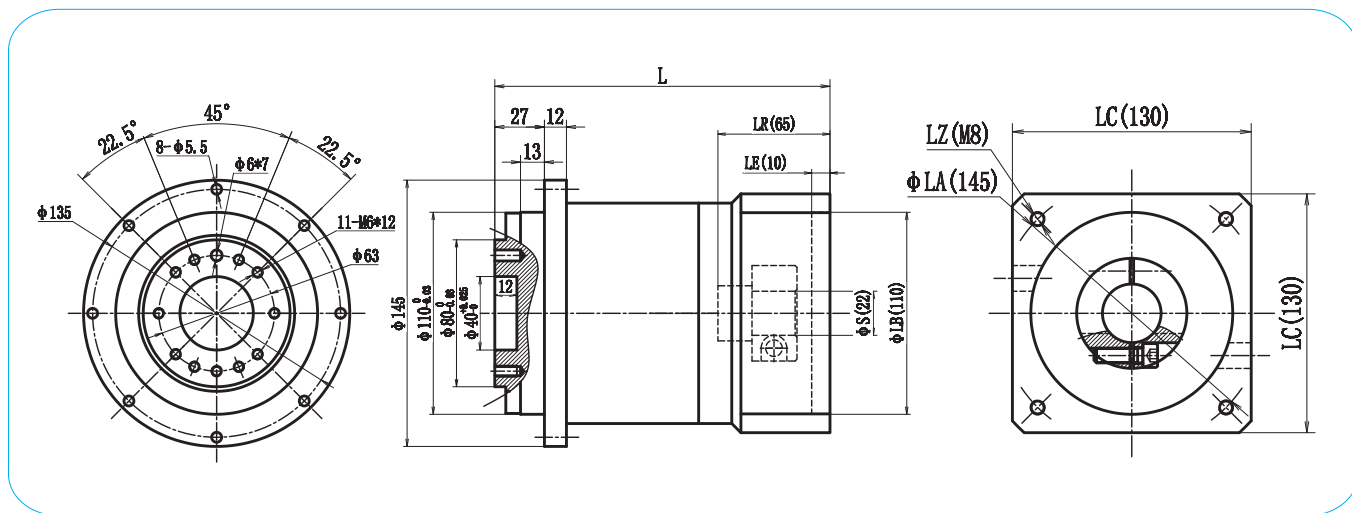
VRT90 Appearance Figure



电机机座 Motor frame	LA	LZ	S	LB	LR	LE	LC	级数 Series		
								L1	L2	L3
60	70	4-M4	11/14	50	30	5	60	86.5	121	151
80	90	4-M5	19	70	35	5	80	86.5	121	151
90	100	4-M6	16/19	80	35	5	90	86.5	121	151

VRT110外形图

VRT110Appearance Figure

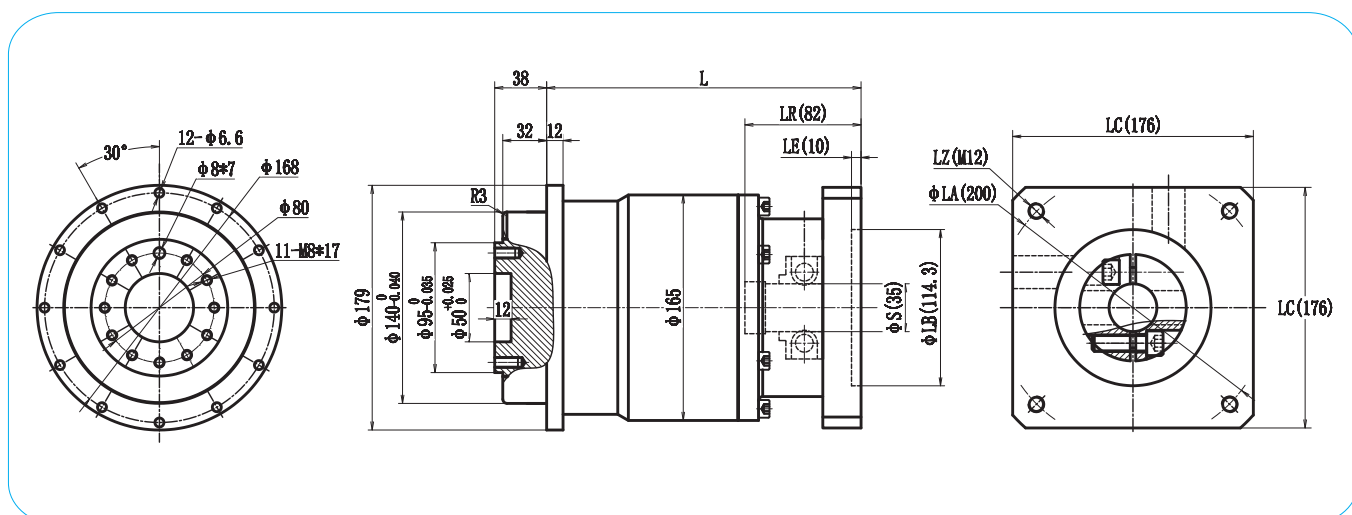


电机机座 Motor frame	LA	LZ	S	LB	LR	LE	LC	级数 Series		
								L1	L2	L3
100	115	4-M8	19/22	95	55	8	100	112	155	193
110	130	4-M8	22	110	55	8	110	112	155	193
130	145	4-M8	22/24	110	65	10	130	112	155	193



VRT140外形图

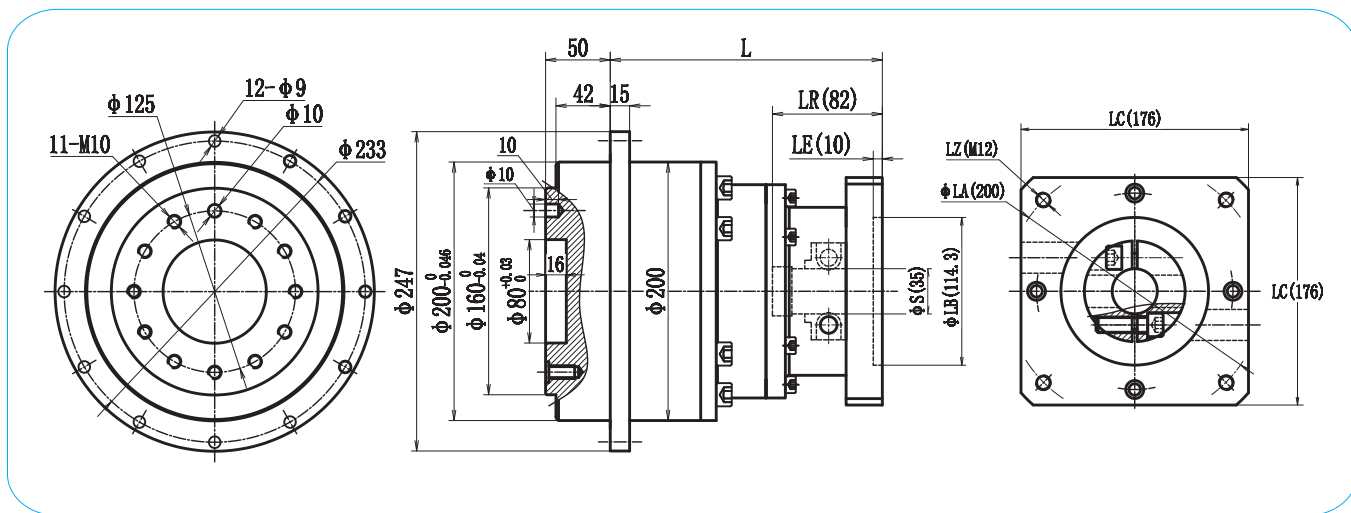
VRT140Appearance Figure



电机机座 Motor frame	LA	LZ	S	LB	LR	LE	LC	级数 Series		
								L1	L2	L3
130	145	4-M8	22/24	110	65	10	130	182	229	277
150	165	4-M10	28/32	130	65	10	150	182	229	277
180	200	4-M12	35	114.3	80	10	180	182	229	277

VRT200外形图

VRT200 Appearance Figure

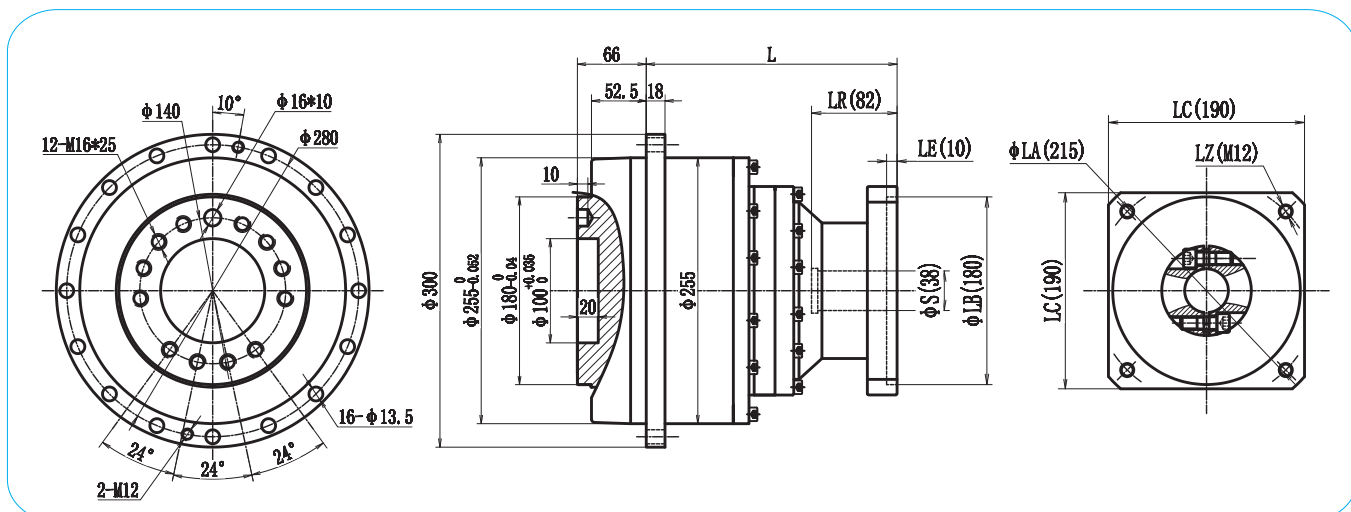


电机机座 Motor frame	LA	LZ	S	LB	LR	LE	LC	级数 Series		
								L1	L2	L3
150	165	4-M10	28/32	130	65	10	150	160	205	253
180	200	4-M12	35/42	114.3	80/114	10	180	160	205	253
190	215	4-M12	42/38	180	80	10	190	160	205	253



VRT255外形图

VRT255 Appearance Figure



电机机座 Motor frame	LA	LZ	S	LB	LR	LE	LC	级数 Series		
								L1	L2	L3
180	200	4-M12	35/42	114.3	80/114	10	180	188	232	258
190	215	4-M12	42/38	180	80	10	190	188	232	258
220	235	4-M12	55	200	110	10	220	188	232	---