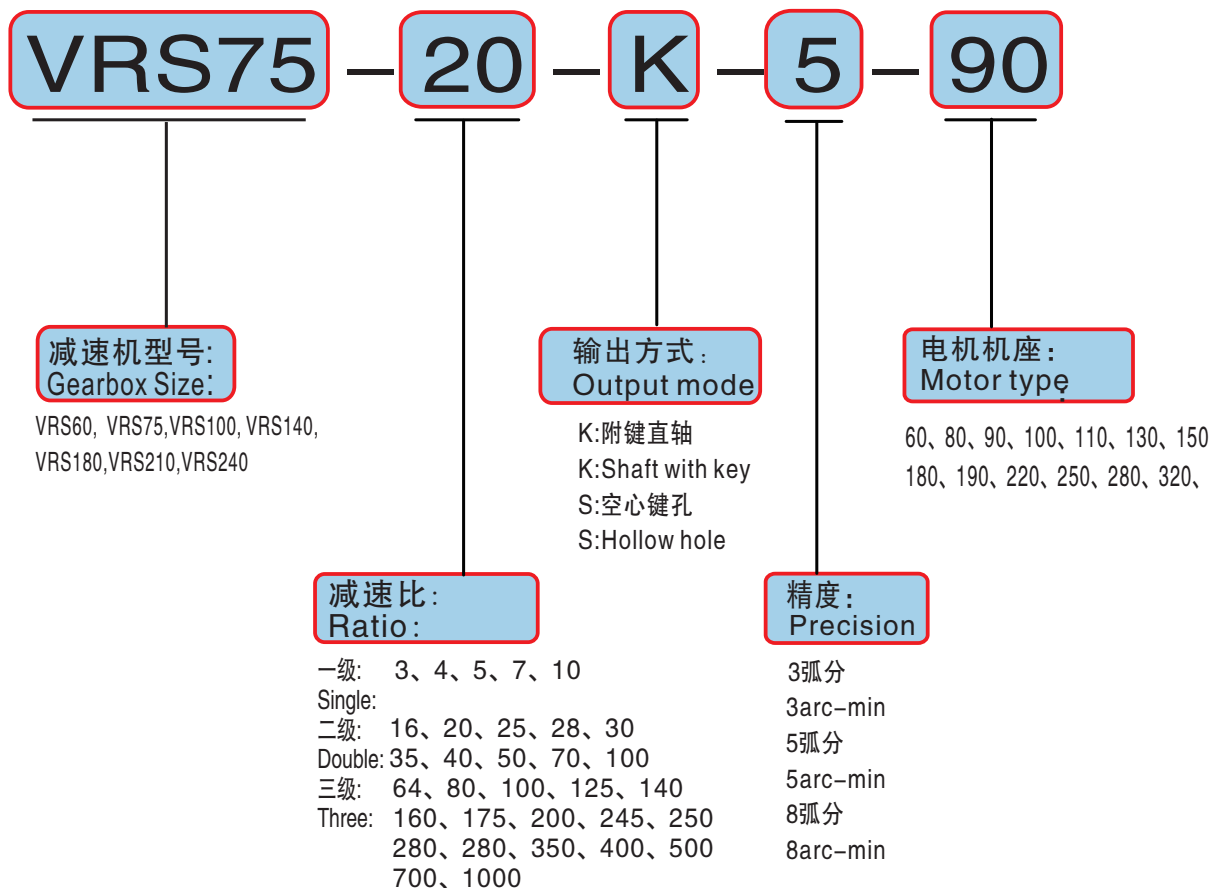


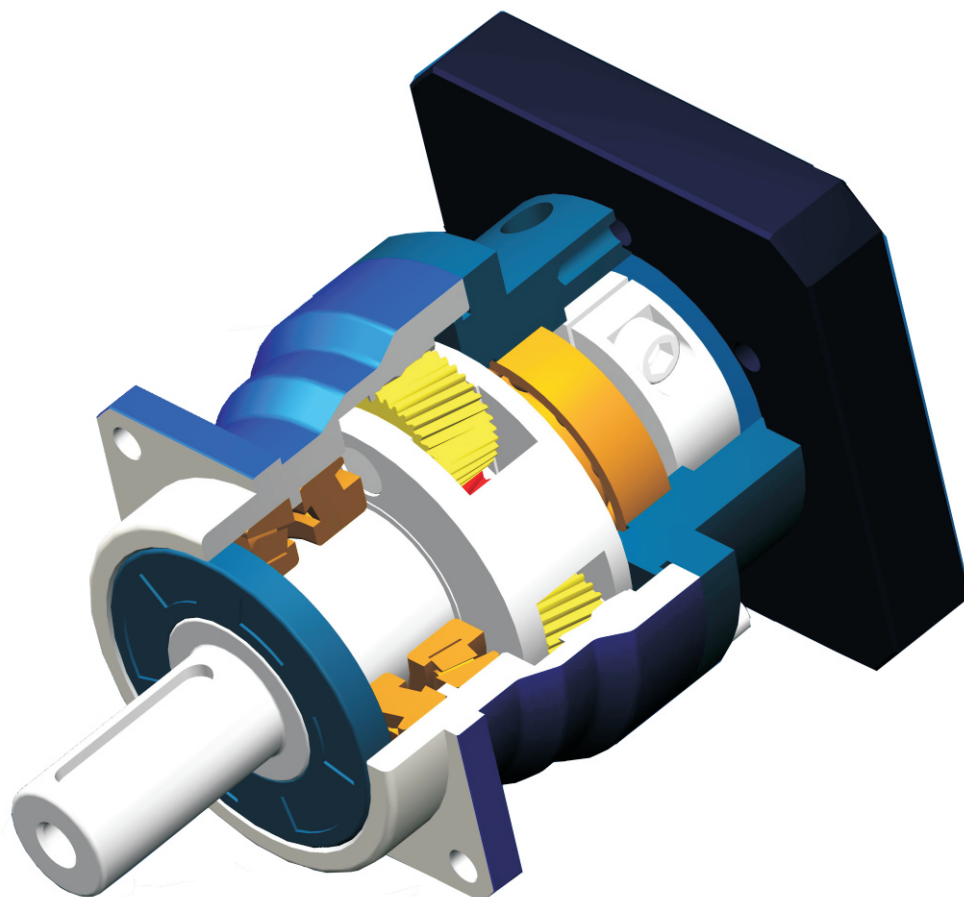
订货型号表示： Ordering representation



减速机工况应用选择表 Application selection of gear reducer						
		使用系数(fs) Use coefficient(fs)				
负载类型 Load type	每小时启动次数Z Start times per hour Z	每日运行时间(h) Daily running time(h)				
		h≤4	4≤h≤8	8≤h≤12	12≤h≤16	16≤h≤24
平稳负载 Steady load	Z≤10	0.9	1.0	1.1	1.4	1.8
	10≤Z≤30	1.0	1.2	1.3	1.6	2.0
	30≤Z≤100	1.2	1.4	1.5	1.8	2.2
中等冲击负载 Medium impact load	Z≤10	1.2	1.4	1.5	1.8	2.2
	10≤Z≤30	1.4	1.6	1.65	2.0	2.5
	30≤Z≤100	1.6	1.8	2.0	2.2	2.8
冲击重载 Shock Overload	Z≤10	1.6	1.8	2.0	2.2	2.8
	10≤Z≤30	1.8	2.0	2.2	2.4	3.0
	30≤Z≤100	2.0	2.3	2.5	2.7	3.3

注：输出惯性大时,请加大一个型号选用；连续运转时工作寿命将降低一半。
 Note: The output inertia is large, please increase the selection of a model;
 Continuous operation working life will be reduced by half.

VRS系列行星减速机 VRS series planetary reducer



产品特点：高精度、承载能大、速比多、寿命长、噪音小、免维护。
Product features: High precision, high bearing capacity, high speed ratio, Long life, low noise, maintenance free.

输入种类：交流伺服马达、直流伺服马达、步进马达。
Type: AC servo motor, DC servo motor, stepping motor.

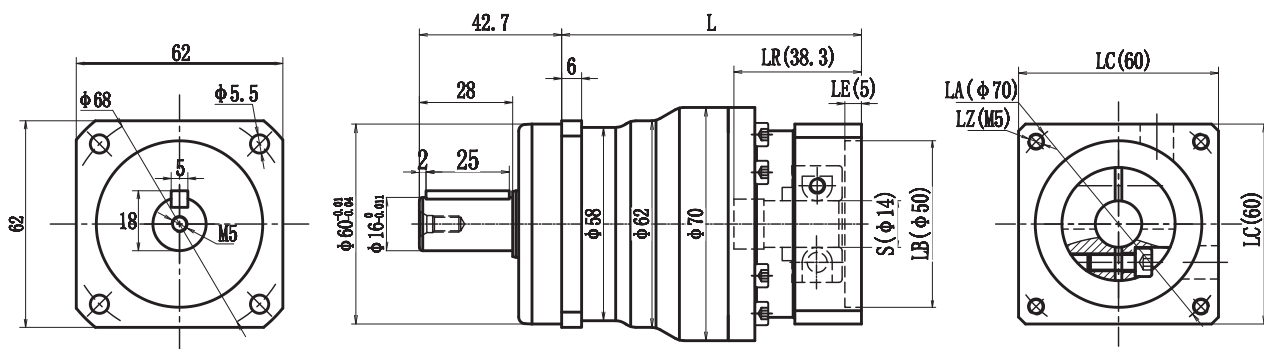
应用领域：机床、军工、新能源设备、工业机器人、印刷设备、自动组装线、等高精度场合的应用。
Application fields: Machine tools, military industry, newenergy equipment, industrial robots, printing equipment, automatic assembly line, and other high precision applications.

减速机性能参数 Gear performance parameters

规格 Specifications	单位 Unit	级数 Series	速比 Ratio	VRS60	VRS75	VRS100	VRS140	VRS180	VRS210	VRS240
额定承受扭矩 T2N Rated torque	Nm	L1	3	28	130	240	450	1100	1750	4500
			4	52	165	320	650	1650	2650	6500
			5	52	165	320	650	1650	2650	6500
			7	36	120	210	500	1250	1850	3900
			9	—	—	—	—	—	—	2500
		10	18	75	165	320	700	1150	—	
		L2	12	28	130	240	450	1100	1750	4500
			15	28	130	240	450	1100	1750	4500
			16	52	165	320	650	1650	2650	6500
			20	52	165	320	650	1650	2650	6500
			25	52	165	320	650	1650	2650	6500
			28	52	165	320	650	1650	2650	6500
			30	28	130	240	450	1100	1750	4500
			35	52	165	320	650	1650	2650	6500
			40	52	165	320	650	1650	2650	6500
			45	-	-	-	-	-	-	-
			50	52	165	320	650	1650	2650	6500
			70	36	120	210	500	1250	1850	3900
			100	18	75	165	320	700	1150	-
		L3	64	52	165	320	650	1650	2650	6500
			80	52	165	320	650	1650	2650	6500
			100	52	165	320	650	1650	2650	6500
			125	52	165	320	650	1650	2650	6500
			160	52	165	320	650	1650	2650	6500
			175	52	165	320	650	1650	2650	6500
			200	52	165	320	650	1650	2650	6500
			250	52	165	320	650	1650	2650	6500
			280	52	165	320	650	1650	2650	6500
300	28		130	240	450	1100	1750	4500		
350	52	165	320	650	1650	2650	6500			
400	52	165	320	650	1650	2650	6500			
500	52	165	320	650	1650	2650	6500			
700	38	120	210	500	1250	1850	3900			
1000	18	75	165	320	700	1150	-			
最大承受扭矩T2B Maximum torque T2B	Nm	L1 L2 L3	3-1000	2.0倍额定输出扭矩 2.0 times the rated output torque						
额定输入转数n1N Rated speed n1N	R/min	L1 L2 L3	3-1000	3000	3000	3000	2000	2000	2000	1500
背隙 Back clearance	arcmin	L1	3-10	≤3	≤3	≤3	≤3	≤3	≤3	≤5
		L2	12-100	≤6	≤6	≤6	≤6	≤6	≤6	≤10
		L3	64-1000	≤8	≤8	≤8	≤8	≤8	≤8	≤15
容许径向力F1 Allowable radial force	N	L1 L2 L3	3-1000	500	1000	3000	5000	8000	12000	20000
容许轴向力F2 Allowable axial force	N	L1 L2 L3	3-1000	300	500	1000	2000	8000	20000	30000
效率 η Efficiency	%	L1	3-10	97%	97%	97%	97%	97%	97%	97%
		L2	9-100	94%	94%	94%	94%	94%	94%	94%
		L3	64-1000	91%	91%	91%	91%	91%	91%	91%
重量 Weight	kg	L1	3-10	1.3	3.6	7.5	16.0	28.0	48.0	110
		L2	9-100	1.5	4.2	9.5	20.0	32.0	60.0	135
		L3	64-1000	1.8	4.8	11.5	24.0	36.0	72.0	150
噪音 Noise	DB	L1 L2 L3	3-1000	≤55	≤55	≤60	≤65	≤70	≤70	≤75

VRS60外形图

VRS60 Appearance Figure

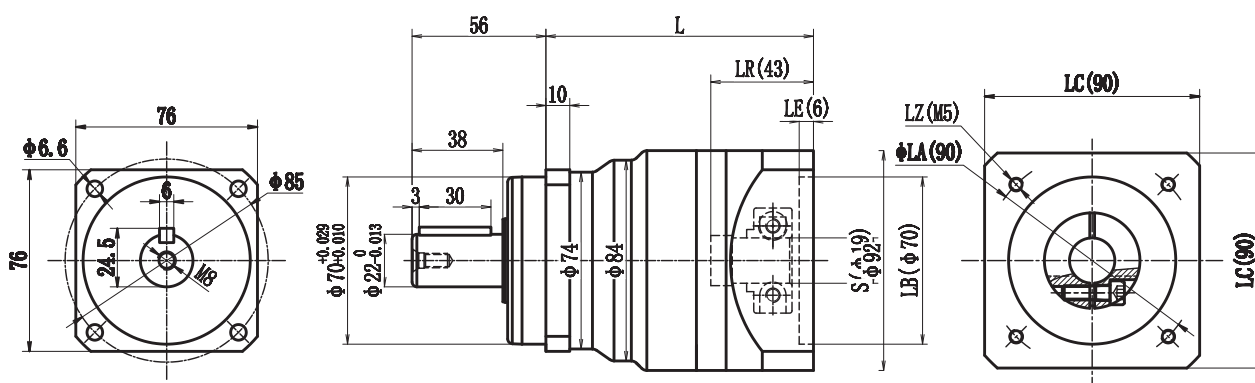


电机机座 Motor frame	LA	LZ	S	LB	LR	LE	LC	级数 Series		
								L1	L2	L3
40	45	4-M3	8	30	25	5	40	86	107	128
60	70	4-M4	11/14	50	30	5	60	86	107	128



VRS75外形图

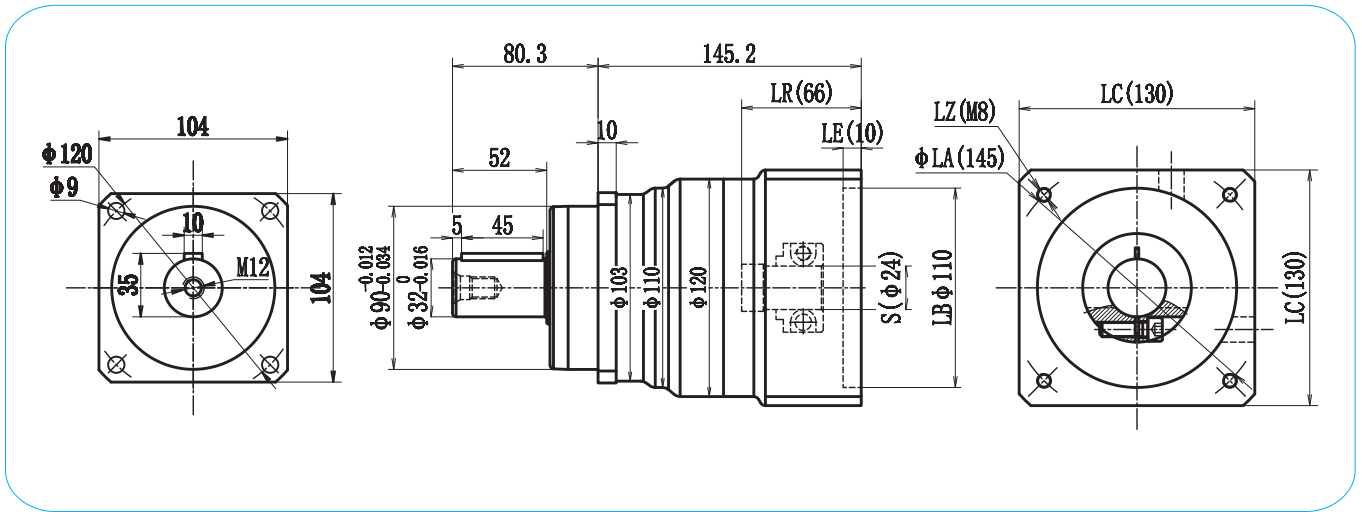
VRS75 Appearance Figure



电机机座 Motor frame	LA	LZ	S	LB	LR	LE	LC	级数 Series		
								L1	L2	L3
60	70	4-M4	11/14	50	30	5	60	110	140	170
80	90	4-M5	19	70	35	5	80	110	140	170
90	100	4-M6	16/19	80	35	5	90	110	140	170

VRS100外形图

VRS100Appearance Figure

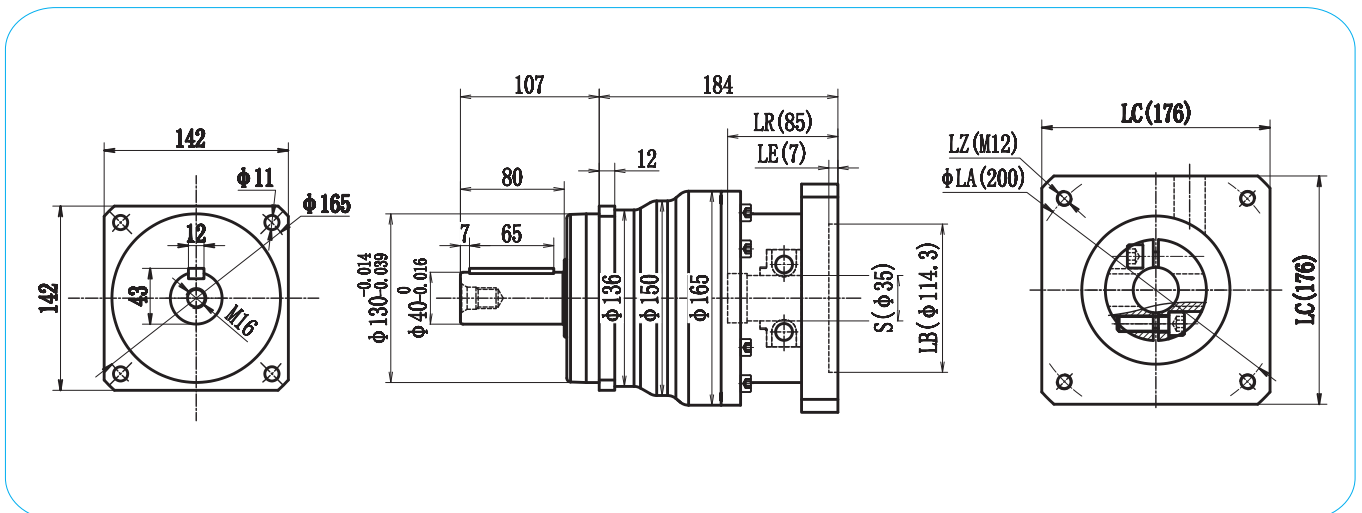


电机机座 Motor frame	LA	LZ	S	LB	LR	LE	LC	级数 Series		
								L1	L2	L3
100	115	4-M8	19/22	95	55	8	100	142	180	218
110	130	4-M8	22	110	55	8	110	142	180	218
130	145	4-M8	22/24	110	65	10	130	142	180	218



VRS140外形图

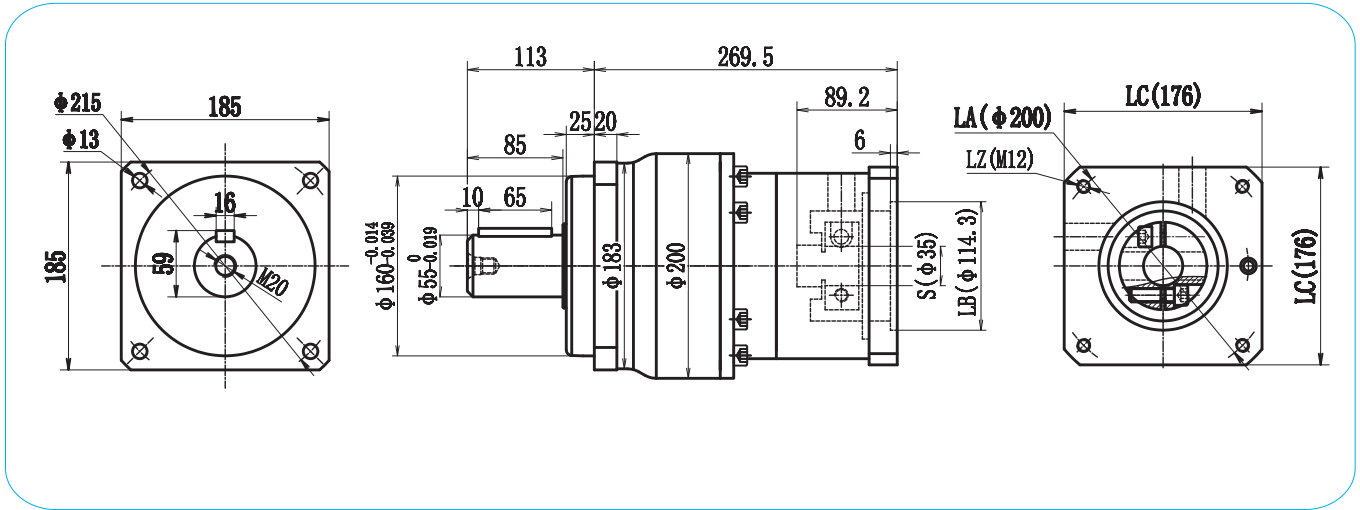
VRS140Appearance Figure



电机机座 Motor frame	LA	LZ	S	LB	LR	LE	LC	级数 Series		
								L1	L2	L3
130	145	4-M8	22/24	110	65	10	130	186	233	280
150	165	4-M10	28/32	130	65	10	150	186	233	280
180	200	4-M12	35	114.3	80	10	180	186	233	280

VRS180外形图

VRS180 Appearance Figure

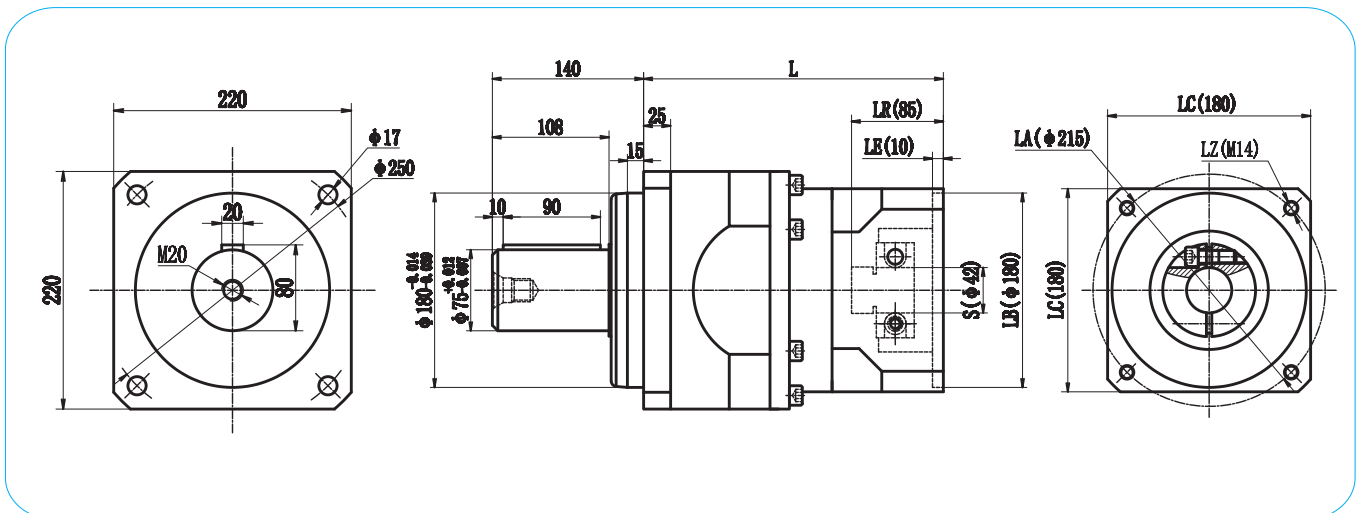


电机机座 Motor frame	LA	LZ	S	LB	LR	LE	LC	级数 Series		
								L1	L2	L3
150	165	4-M10	28/32	130	65	10	150	220	252	299
180	200	4-M12	35/42	114.3	80/114	10	180	220	252	299
190	215	4-M12	42/38	180	80	10	190	220	252	299



VRS210外形图

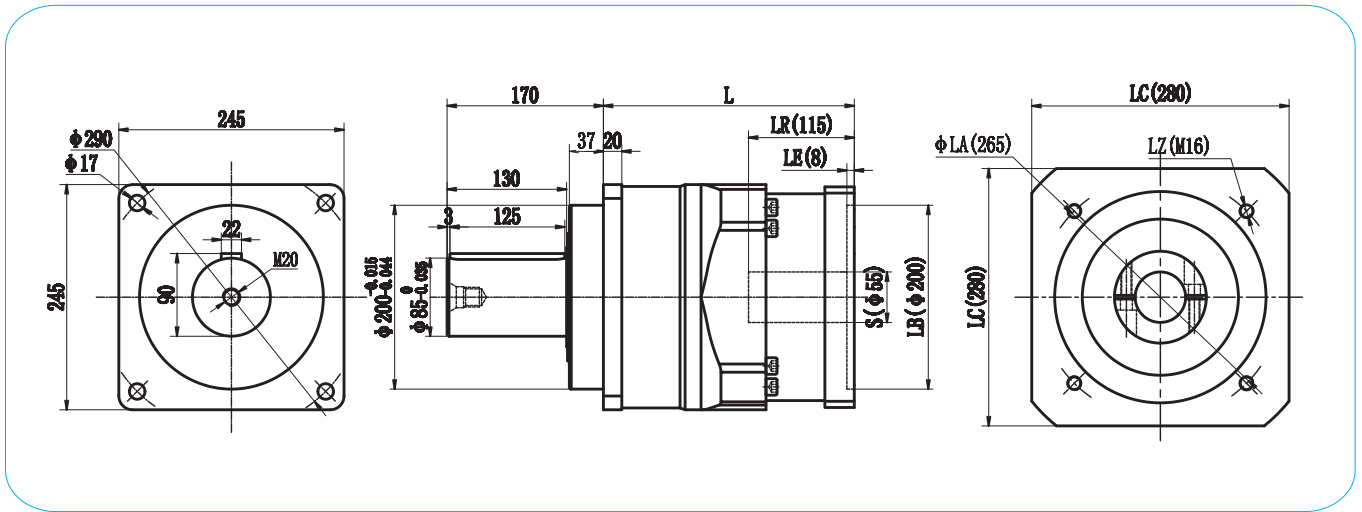
VRS210 Appearance Figure



电机机座 Motor frame	LA	LZ	S	LB	LR	LE	LC	级数 Series		
								L1	L2	L3
180	200	4-M12	35/42	114.3	80/114	10	180	226	296	328
190	215	4-M12	42/38	180	80	10	190	226	296	328
220	235	4-M12	55	200	110	10	220	255	326	---

VRS240外形图

VRS240 Appearance Figure



电机机座 Motor frame	LA	LZ	S	LB	LR	LE	LC	级数 Series		
								L1	L2	L3
220	235	4-M12	55	200	110	10	220	360	385	440
250	265	4-M12	60/65	230	140	10	250	390	415	---
280	300	4-M16	55/70	250	140	10	280	390	415	---

