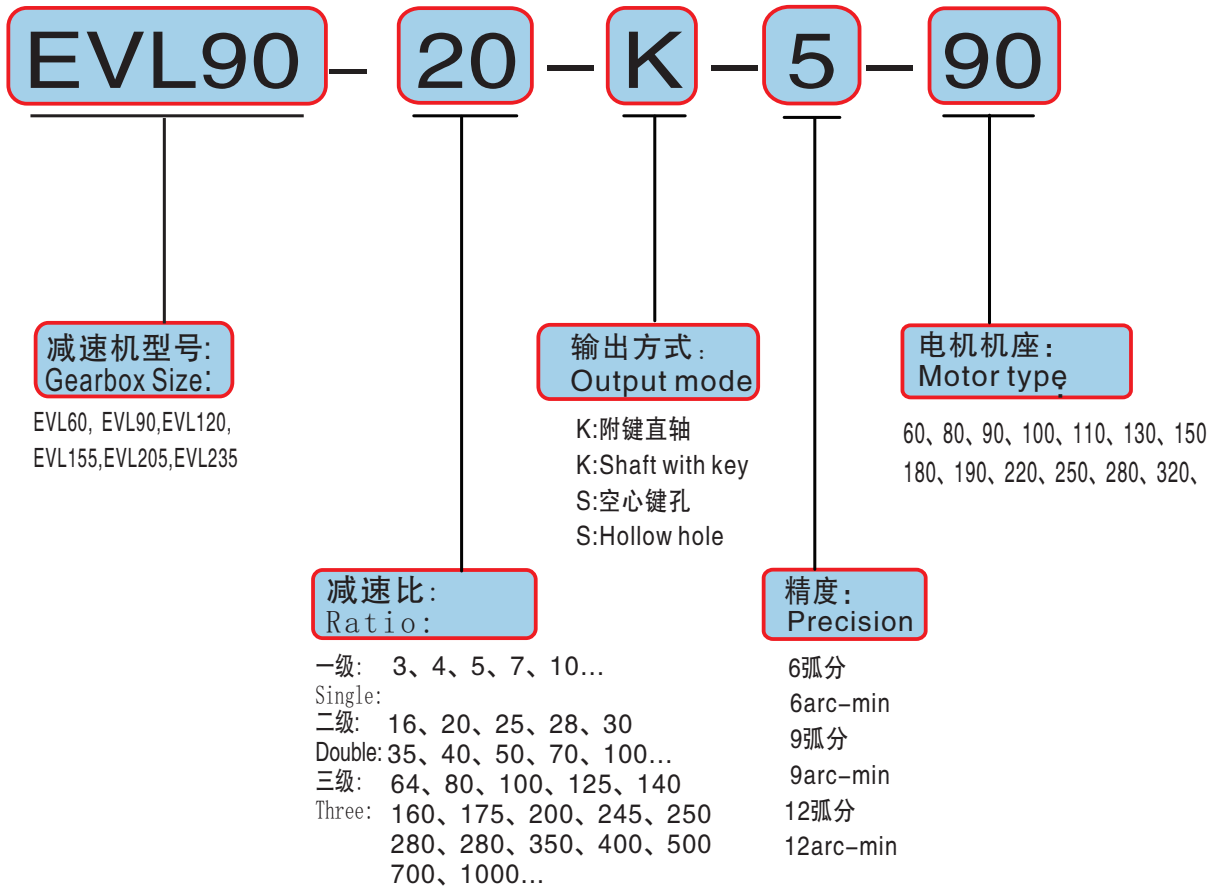


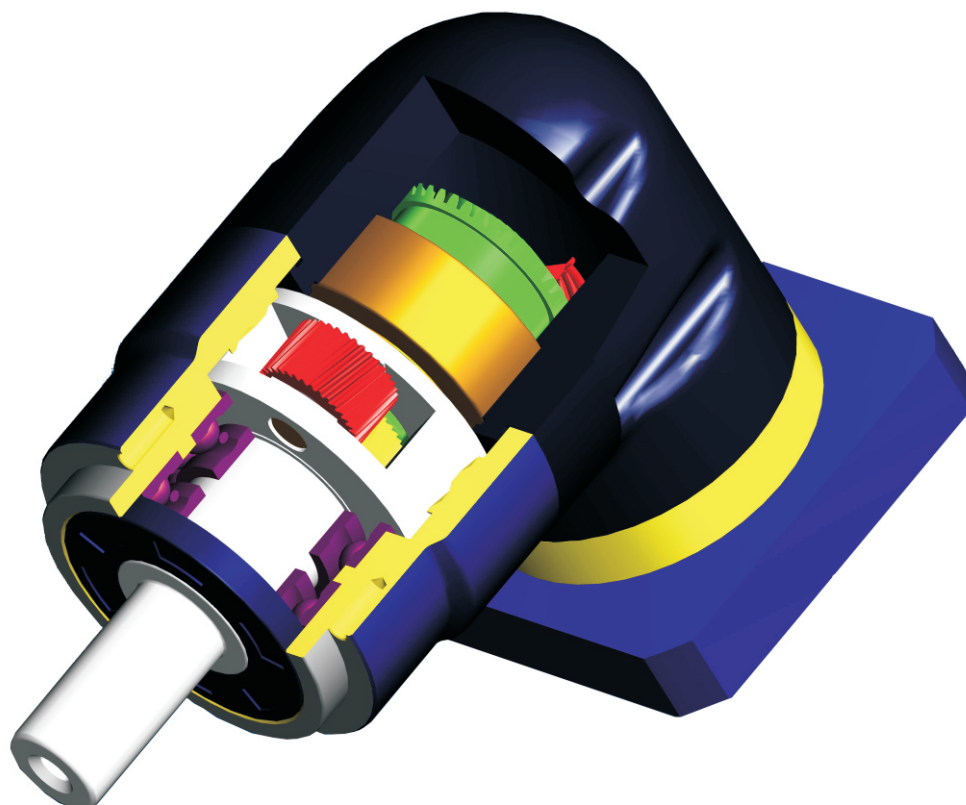
订货型号表示： Ordering representation



减速机工况应用选择表 Application selection of gear reducer						
		使用系数(fs) Use coefficient(fs)				
负载类型 Load type	每小时启动次数Z Start times per hour Z	每日运行时间(h) Daily running time(h)				
		h≤4	4≤h≤8	8≤h≤12	12≤h≤16	16≤h≤24
平稳负载 Steady load	Z≤10	0.9	1.0	1.1	1.4	1.8
	10≤Z≤30	1.0	1.2	1.3	1.6	2.0
	30≤Z≤100	1.2	1.4	1.5	1.8	2.2
中等冲击负载 Medium impact load	Z≤10	1.2	1.4	1.5	1.8	2.2
	10≤Z≤30	1.4	1.6	1.65	2.0	2.5
	30≤Z≤100	1.6	1.8	2.0	2.2	2.8
冲击重载 Shock Overload	Z≤10	1.6	1.8	2.0	2.2	2.8
	10≤Z≤30	1.8	2.0	2.2	2.4	3.0
	30≤Z≤100	2.0	2.3	2.5	2.7	3.3

注：输出惯性大时,请加大一个型号选用；连续运转时工作寿命将降低一半。
Note: The output inertia is large, please increase the selection of a model;
Continuous operation working life will be reduced by half.

EVL系列行星减速机 EVL series planetary reducer



产品特点：高精度、承载能大、速比多、寿命长、噪音小、免维护。
Product features: High precision, high bearing capacity, high Speed ratio, Long life, low noise, maintenance free.

输入种类：交流伺服马达、直流伺服马达、步进马达。
Type: AC servo motor, DC servo motor, stepping motor.

应用领域：机床、军工、新能源设备、工业机器人、印刷设备、自动组
装线、等高精度场合的应用。
Application fields: Machine tools, military industry, newenergy
equipment, industrial robots, printing equipment, automatic
Assembly line, and other high precision applications.

减速机性能参数 Gear performance parameters

规格 Specifications	单位 Unit	级数 Series	速比 Ratio	EVL70	EVL90	EVL120	EVL155	EVL205	EVL235
额定承受扭矩 T2N Rated torque	Nm	L1	3	28	130	240	450	1100	1750
			4	52	165	320	650	1650	2650
			5	52	165	320	650	1650	2650
			7	36	120	210	500	1250	1850
			10	18	75	165	320	700	1150
		L2	9	28	130	240	450	1100	1750
			12	28	130	240	450	1100	1750
			15	28	130	240	450	1100	1750
			16	52	165	320	650	1650	2650
			20	52	165	320	650	1650	2650
			25	52	165	320	650	1650	2650
			28	52	165	320	650	1650	2650
			30	28	130	240	450	1100	1750
			35	52	165	320	650	1650	2650
			40	52	165	320	650	1650	2650
			50	52	165	320	650	1650	2650
			70	36	120	210	500	1250	1850
			100	18	75	165	320	700	1150
		L3	64	52	165	320	650	1650	2650
			80	52	165	320	650	1650	2650
			100	52	165	320	650	1650	2650
			125	52	165	320	650	1650	2650
			150	52	165	320	650	1650	2650
			160	52	165	320	650	1650	2650
			175	52	165	320	650	1650	2650
			200	52	165	320	650	1650	2650
			250	52	165	320	650	1650	2650
			280	52	165	320	650	1650	2650
			300	28	130	240	450	1100	1750
			350	52	165	320	650	1650	2650
			400	52	165	320	650	1650	2650
			500	52	165	320	650	1650	2650
			700	38	120	210	500	1250	1850
1000	18	75	165	320	700	1150			
最大承受扭矩T2B Maximum torque T2B	Nm	L1 L2 L3	3-1000	2.0倍额定输出扭矩 2.0 times the rated output torque					
额定输入转数n1N Rated speed n1N	R/min	L1 L2 L3	3-1000	3000	3000	3000	2000	2000	2000
背隙 Back clearance	arcmin	L1	3-10	≤6	≤6	≤6	≤6	≤6	≤6
		L2	12-100	≤9	≤9	≤9	≤9	≤9	≤9
		L3	64-1000	≤12	≤12	≤12	≤12	≤12	≤12
容许径向力F1 Allowable radial force	N	L1 L2 L3	3-1000	500	500	1000	3000	5000	8000
容许轴向力F2 Allowable axial force	N	L1 L2 L3	3-1000	300	500	1000	2000	8000	20000
效率 η Efficiency	%	L1	3-10	95%	95%	95%	95%	95%	95%
		L2	9-100	92%	92%	92%	92%	92%	92%
		L3	64-1000	90%	90%	90%	90%	90%	90%
重量 Weight	kg	L1	3-10	1.3	3.6	7.5	16.0	28.0	48.0
		L2	9-100	1.5	4.2	9.5	20.0	32.0	60.0
		L3	64-1000	1.8	4.8	11.5	24.0	36.0	72.0
噪音 Noise	DB	L1 L2 L3	3-1000	≤55	≤55	≤60	≤70	≤70	≤75

注：输入伞齿轮为1:1

Note: the input bevel gear is 1:1

减速机性能参数 Gear performance parameters

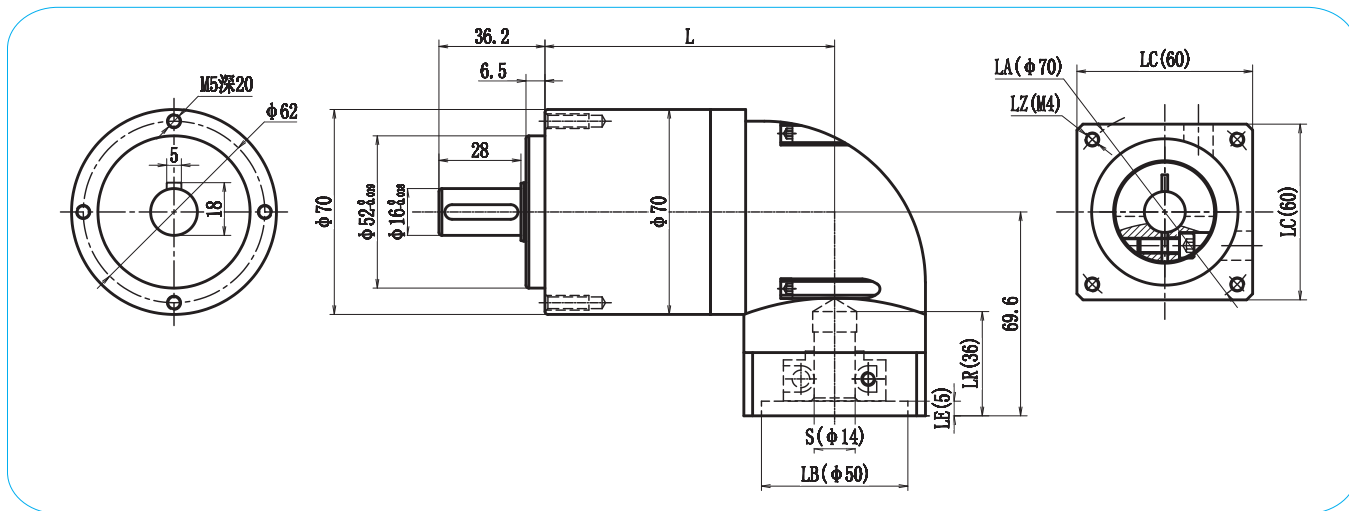
规格 Specifications	单位 Unit	级数 Series	速比 Ratio	EVL70	EVL90	EVL120	EVL155	EVL205	EVL235			
额定承受扭矩 T2N Rated torque T2B	Nm	L1	6	28	130	240	450	1100	1750			
			8	52	165	320	650	1650	2650			
			10	52	165	320	650	1650	2650			
			14	36	120	210	500	1250	1850			
			20	18	75	165	320	700	1150			
		L2	18	28	130	240	450	1100	1750			
			24	28	130	240	450	1100	1750			
			30	28	130	240	450	1100	1750			
			32	52	165	320	650	1650	2650			
			40	52	165	320	650	1650	2650			
			50	52	165	320	650	1650	2650			
			56	52	165	320	650	1650	2650			
			60	28	130	240	450	1100	1750			
			70	52	165	320	650	1650	2650			
			80	52	165	320	650	1650	2650			
			100	52	165	320	650	1650	2650			
			140	36	120	210	500	1250	1850			
			200	18	75	165	320	700	1150			
		L3	128	52	165	320	650	1650	2650			
			160	52	165	320	650	1650	2650			
			200	52	165	320	650	1650	2650			
			250	52	165	320	650	1650	2650			
			300	52	165	320	650	1650	2650			
			320	52	165	320	650	1650	2650			
			350	52	165	320	650	1650	2650			
			400	52	165	320	650	1650	2650			
			500	52	165	320	650	1650	2650			
			560	52	165	320	650	1650	2650			
			600	28	130	240	450	1100	1750			
			700	52	165	320	650	1650	2650			
			800	52	165	320	650	1650	2650			
			1000	52	165	320	650	1650	2650			
			1400	38	120	210	500	1250	1850			
			2000	18	75	165	320	700	1150			
			最大承受扭矩T2B Maximum torque T2B	Nm	L1 L2 L3	6-2000	2.0倍额定输出扭矩 2.0 times the rated output torque					
			额定输入转数n1N Rated speed n1N	R/min	L1 L2 L3	6-2000	3000	3000	3000	2000	2000	2000
背隙 Back clearance	arcmin	L1	6-20	≤6	≤6	≤6	≤6	≤6	≤6			
		L2	18-200	≤9	≤9	≤9	≤9	≤9	≤9			
		L3	128-2000	≤12	≤12	≤12	≤12	≤12	≤12			
容许径向力F1 Allowable radial force	N	L1 L2 L3	6-2000	500	500	1000	3000	5000	8000			
容许轴向力F2 Allowable axial force	N	L1 L2 L3	6-2000	300	500	1000	2000	8000	20000			
效率 η Efficiency	%	L1	6-20	95%	95%	95%	95%	95%	95%			
		L2	18-200	92%	92%	92%	92%	92%	92%			
		L3	124-2000	90%	90%	90%	90%	90%	90%			
重量 Weight	kg	L1	6-20	1.3	3.6	7.5	16.0	28.0	48.0			
		L2	18-200	1.5	4.2	9.5	20.0	32.0	60.0			
		L3	128-2000	1.8	4.8	11.5	24.0	36.0	72.0			
噪音 Noise	DB	L1 L2 L3	6-2000	≤55	≤55	≤60	≤70	≤70	≤75			

注：输入伞齿轮为1:2

Note: the input bevel gear is 1:2

EVL70外形图

EVL70 Appearance Figure

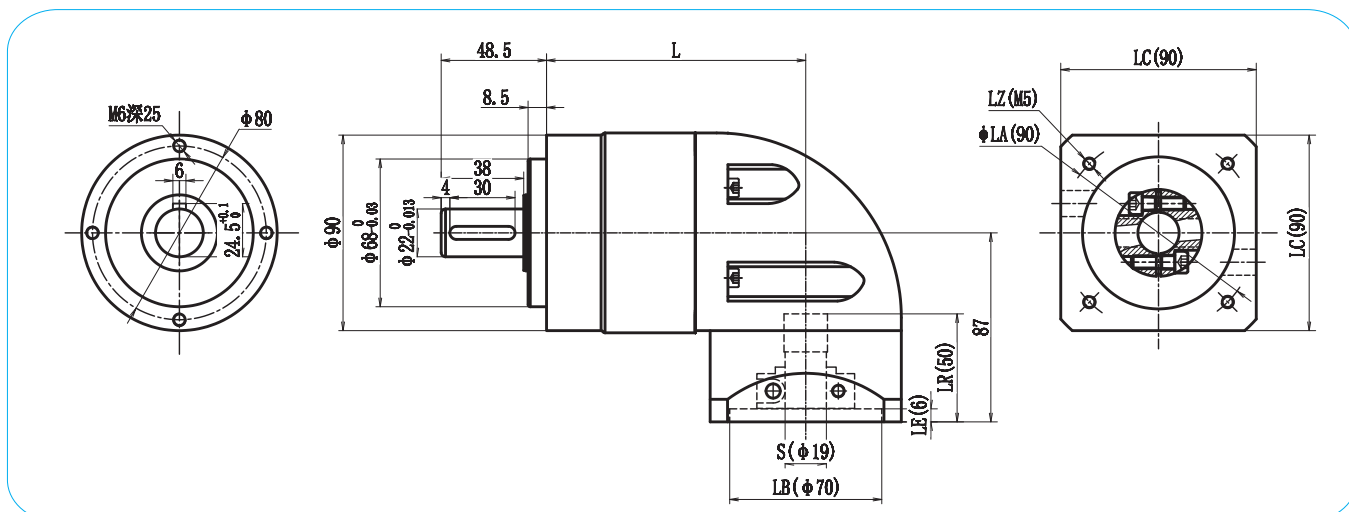


电机机座 Motor frame	LA	LZ	S	LB	LR	LE	LC	级数 Series		
								L1	L2	L3
40	45	4-M3	8	30	25	5	40	95	116	137
60	70	4-M4	11/14	50	30	5	60	95	116	137



EVL90外形图

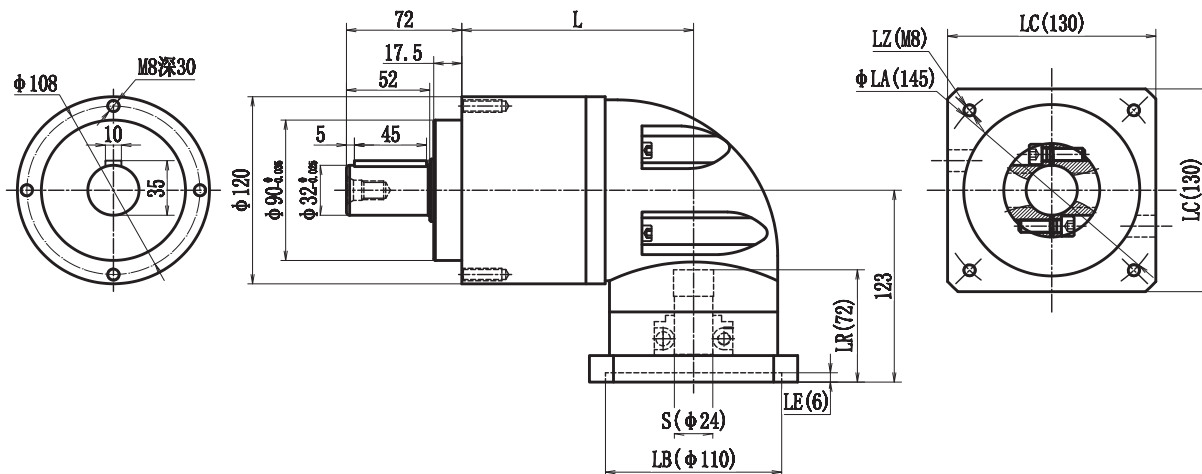
EVL90 Appearance Figure



电机机座 Motor frame	LA	LZ	S	LB	LR	LE	LC	级数 Series		
								L1	L2	L3
60	70	4-M4	11/14	50	30	5	60	120	150	180
80	90	4-M5	19	70	35	5	80	120	150	180
90	100	4-M6	16/19	80	35	5	90	120	150	180

EVL120外形图

EVL120Appearance Figure

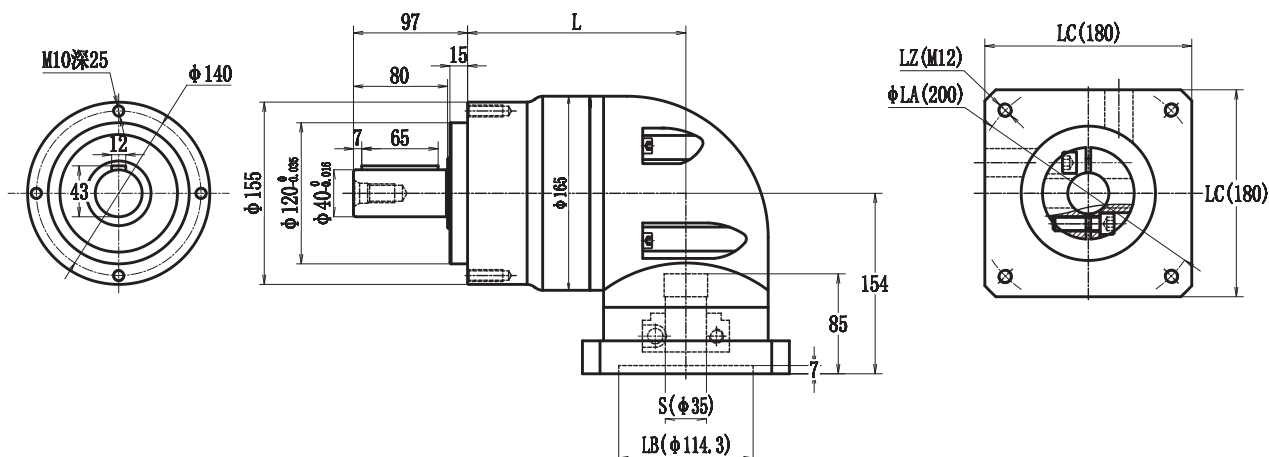


电机机座 Motor frame	LA	LZ	S	LB	LR	LE	LC	级数 Series		
								L1	L2	L3
100	115	4-M8	19/22	95	55	8	100	145	183	221
110	130	4-M8	22	110	55	8	110	145	183	221
130	145	4-M8	22/24	110	65	10	130	145	183	221



EVL155外形图

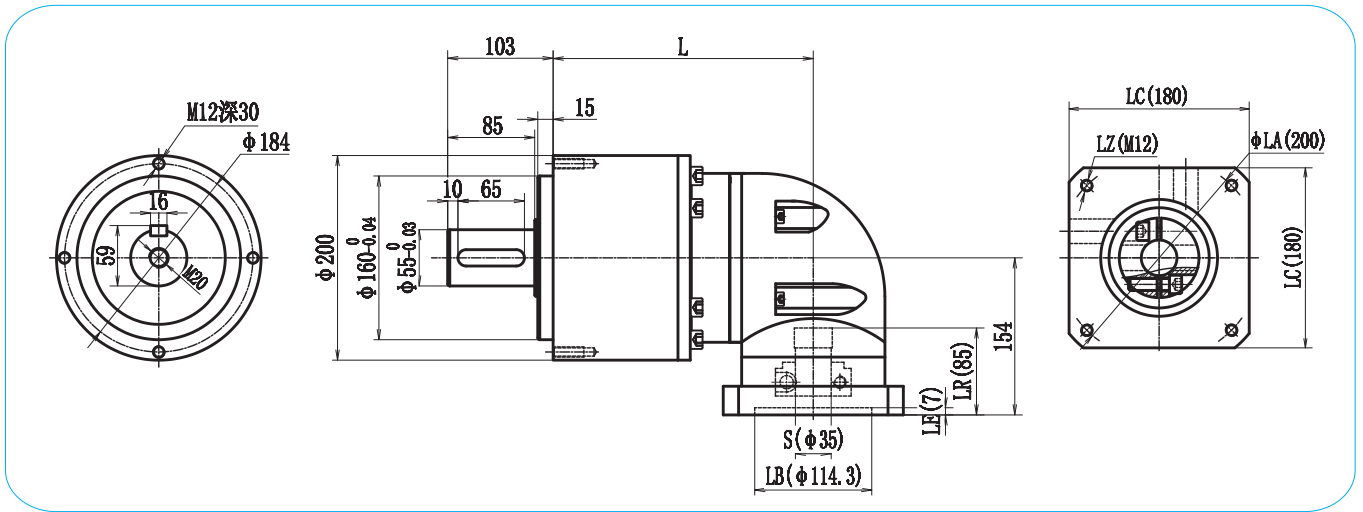
EVL155Appearance Figure



电机机座 Motor frame	LA	LZ	S	LB	LR	LE	LC	级数 Series		
								L1	L2	L3
130	145	4-M8	22/24	110	65	10	130	186	234	282
150	165	4-M10	28/32	130	65	10	150	186	234	282
180	200	4-M12	35	114.3	80	10	180	186	234	282

EVL205外形图

EVL205 Appearance Figure

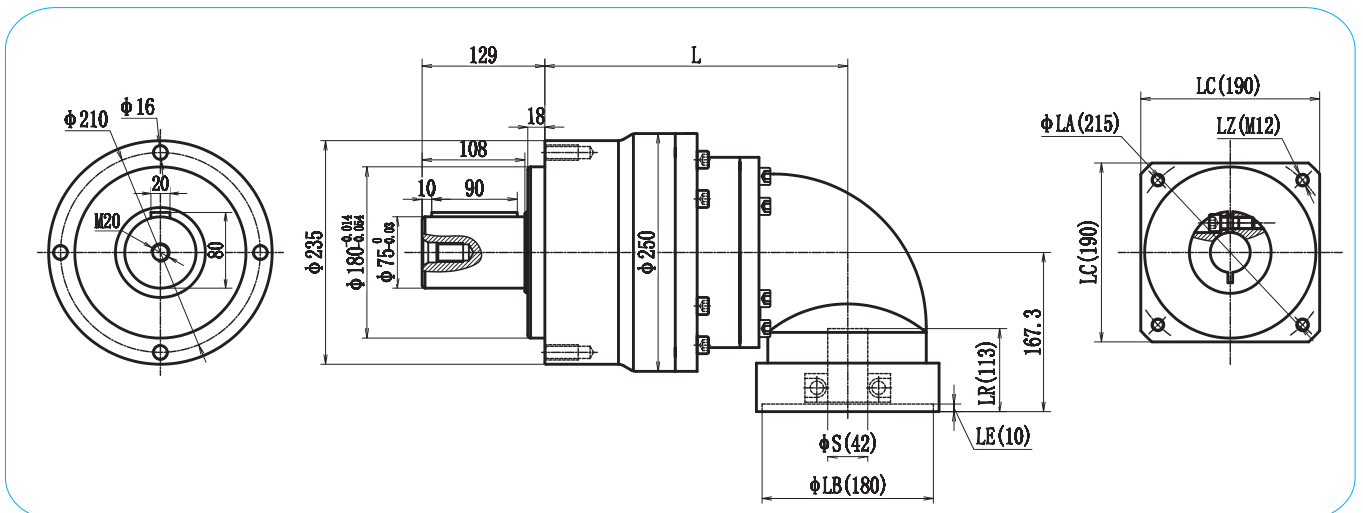


电机机座 Motor frame	LA	LZ	S	LB	LR	LE	LC	级数 Series		
								L1	L2	L3
150	165	4-M10	28/32	130	65	10	150	235	255	302
180	200	4-M12	35/42	114.3	80/114	10	180	235	255	302
190	215	4-M12	42/38	180	80	10	190	235	255	302



EVL235外形图

EVL235 Appearance Figure



电机机座 Motor frame	LA	LZ	S	LB	LR	LE	LC	级数 Series		
								L1	L2	L3
180	200	4-M12	35/42	114.3	80/114	10	180	285	330	350
190	215	4-M12	42/38	180	80	10	190	285	330	350
220	235	4-M12	55	200	110	10	220	285	330	350