

**DIYUE PRECISION  
TECHNOLOGY**

全球专业伺服电动缸制造商

**DY伺服行星一体电缸**



**DIYUE PRECISION  
TECHNOLOGY**

**帝悦精密科技(苏州)有限公司**  
Di Yue Precision Technology (Suzhou) Co., Ltd.

地址: 江苏省太仓市浏河镇北海路111号    A No. 111 Beihai Road, Liuhe Town, Taicang City, Jiangsu Province  
电话: 512 53658777    512 53658666    T 512 53658777    512 53658666  
传真: 512 53658444    512 53658555    F 512 53658444    512 53658555  
网址: www.deu-gam.com                      W www.deu-gam.com

本公司有可能在没有事先预告的情况下更改产品的设计, 敬请谅解。  
The company may change without prior notice the design of the product, please kindly understand.

**GLOBAL PROFESSIONAL MANUFACTURER  
OF PLANETARY REDUCER  
AND SERVO ELECTRIC CYLINDER  
全球专业的行星减速机和伺服电动缸制造商**

**GAM帝悦**

FOR MORE INFORMATION, PLEASE VISIT  
OUR WEBSITE

欲知更多详情, 请浏览我们的网站.

[WWW.DEU-GAM.COM](http://WWW.DEU-GAM.COM)

# 18"

EACH 18 SECONDS  
ONE MANUFACTURER OF MACHINE OF DECELERATE  
IS INSTALLED WORLDWIDE

每18秒就有一台**帝悦专业伺服电动缸**在安装



帝悦精密科技(苏州)有限公司是专业研发、制造和销售精密齿轮传动、直线运动和伺服控制设备的中外合资企业。公司秉承GAM在传动自动化领域的先进研究与技术水平,不断引进国际最新设计制造工艺,结合市场及用户实际需求,设计和制造各种工业传动设备。

GAM生产的产品被业界誉为世界一流产品,以其高性能、高品质、高性价比和技术领先性赢得了顾客高度满意。这是GAM长期不懈致力于新品研发、原有产品不断改良进化所取得的成果,而且我们不断探索精密传动产品、伺服控制产品在各领域中的潜在应用,从“存在激烈价格竞争的通用型产品”到“高附加值、高品质、高性能的产品”,GAM应有尽有。

公司在美国、中国、印度、德国设立了四大技术中心及生产基地,来满足各自市场的不同需求。GAM公司的研发与销售、生产、市场推广紧密联系,并且实现了信息共享。公司坚信“用国际品质才能赢得国内市场”,在技术、设备和管理等方面完全与美国接轨。GAM产品与美国GE、法国alstom、德国西马克、德国海德堡、法国拉法基、台泥和日本的三菱重工、日立、住友、中联、三一、中船、宝钢等著名跨国公司建立合作关系。

随着企业管理的优化提升和公司综合素质的不断提高,有力地推动和促进了企业整体经济效益的持续快速增长。展望未来,帝悦精密科技(苏州)有限公司豪情满怀,信心百倍。把我们的产品投向世界各地,服务全球,推动全球机械工业进步和发展。

DIYUE Precision Technology (Suzhou) Co., Ltd is a joint venture with its specialties in R&D, manufacturing and sales of precision gear drive, linear motion and servo control devices. In accordance with advanced research and technology level of the GAM of US in drive automation industry, DIYUE keeps bringing in newest design and production process in the world, in order to design and manufacture various industrial drive equipments based on the actual demands of the market and clients.

The GAM products, which have won high content of the clients with their high performance, high quality and high cost performance, are awarded as the first grade products in the world by the industry. This is resulted from that GAM is persistently committed to new products R&D, original products improving and upgrading. We keep developing potential applications of precision drive productions and servo control products in various fields, so GAM has all products that are necessary by the industry, i.e. from “general products with fierce price competition” to “high additive value, high quality, and high performance products”, etc.

GAM has founded four technology center and productions bases in US, China, India and Germany to meet different demands from various markets. The R&D, sales, production and marketing of GAM are high connected with each other and information is shared promptly within the organization. We firmly believe that “only with international quality could we win domestic market”, as a result, our technology, equipments and management are highly in line with GAM of the US. GAM has established cooperation relationship with a large number of well known multinational companies such as GE of the US, Alstom and Lafarge of France, SMS, Heidelberg of Germany, TCC of Taiwan, Mitsubishi, Hitachi and Sumitomo of Japan, Zoomlion, Sany, CSIC and Baosteel of China, etc.

As our company management is keeping optimizing and our comprehensive competence is keeping improving, the whole economic benefits and profitability of the company are increased at a fast pace continuously. Looking forward to the future, DIYUE Precision Technology (Suzhou) Co., Ltd is full of pride and confidence. We will deliver our products and services all around the world to promote the progress and development of engineering industry of the World.

## COMPANY STRENGTH

### 加工实力

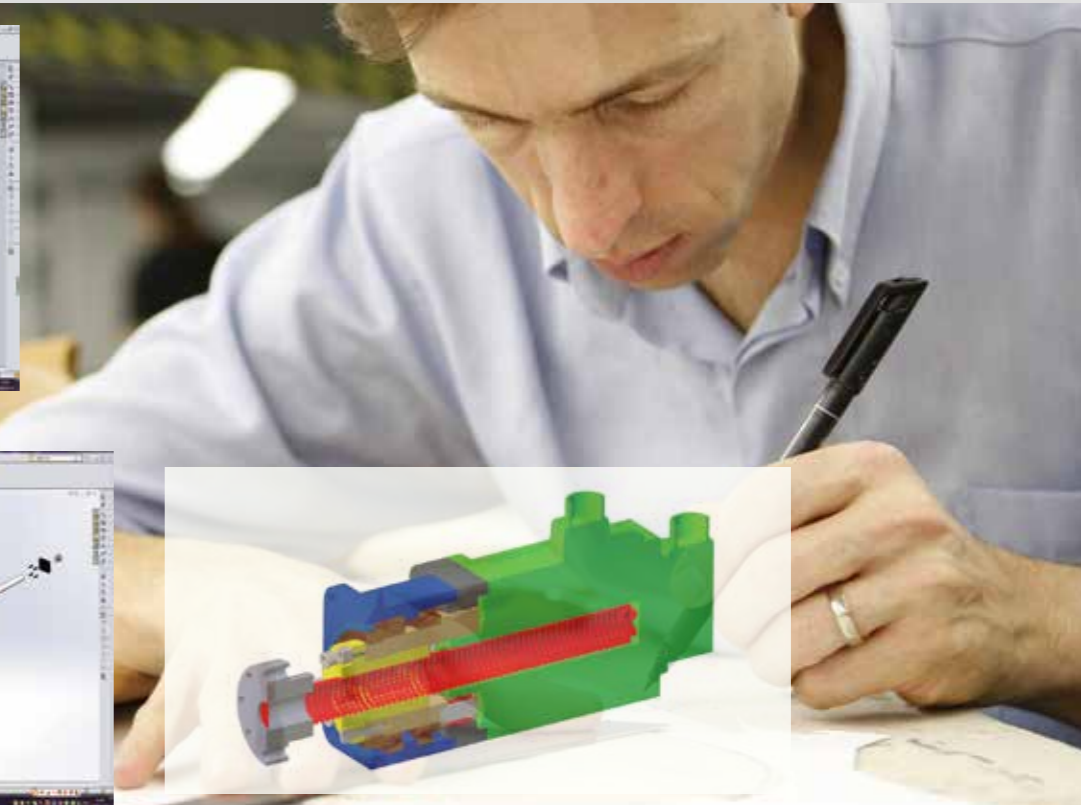
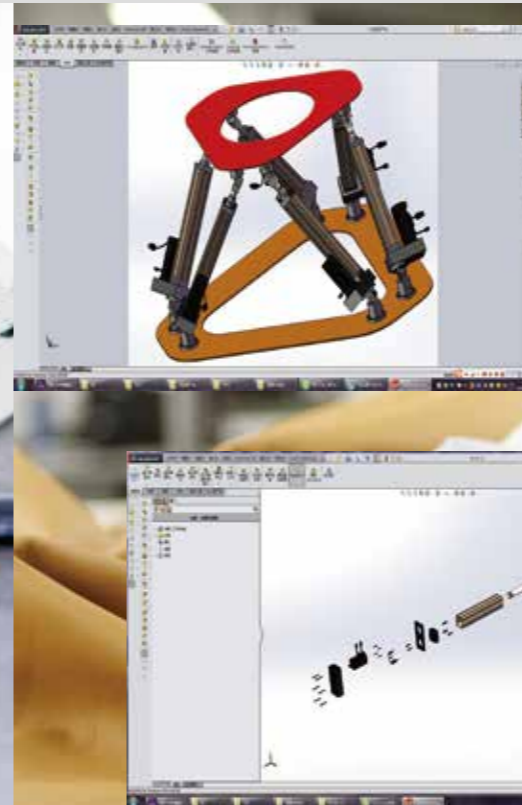
进口的数控加工设备，保证每一个配件的精度，高要求的管理水平，是我们提供每一台产品的必然保证。



## R & D STRENGTH

### 研发实力

GAM齿轮箱产品被业界誉为世界第一等品，以其高性能、高品质、高性价比和技术领先性赢得了顾客高度满意。这是GAM长期不懈致力于新品研发、原有产品不断改良进化所取得的成果，而且我们不断探索齿轮传动产品、伺服控制产品在各领域中的潜在应用，从“存在激烈价格竞争的通用型产品”到“高附加值、高品质、高性能”的产品GAM应有尽有。



Imported CNC processing equipment, ensure the accuracy of every parts, high requirements of the management level, provide necessary guarantee for the products provided by us.

The GAM products, which have won high content of the clients with their high performance, high quality and high cost performance, are awarded as the first grade products in the world by the industry. This is resulted from that GAM is persistently committed to new products R&D, original products improving and upgrading. We keep developing potential applications

of precision drive productions and servo control products in various fields, so GAM has all products that are necessary by the industry, i.e. from "general products with fierce price competition" to "high additive value, high quality, and high performance products", etc.

Professional testing experiment  
Quality is more important than everything  
专业检测实验/质量重于一切



公司在美国、中国、印度、德国设立了四大技术中心及生产基地，来满足各自市场的不同需求。GAM公司的研发与销售、生产、市场推广紧密联系，并且实现了信息共享。

本公司实施的过程，以确保最大限度满足客户的需求，向客户提供满意的服务体系，让客户能够在购物和售后过程中体验专业的服务。

### Creation, Innovation, Improvement

创建、创新、改进

超高精度的检测设备，全流程的检验手段，是每一个产品质量合格的保证

Super high precision testing equipment adn whole inspection guarantees produvt quality.

GAM has founded four technology center and productions bases in US, China, India and Germany to meet different demands from various markets. The R&D, sales, production and marketing of GAM are high connected with each other and information is shared promptly within the organization.

We are doing our best to meet cilents' demands to the largest extent and provide satisfying service system, so our clients could experience professional services in purchasing and after sales process.

# GAM帝悦

PROFESSIONAL MANUFACTURER OF MACHINE OF DECELERATE OF PLANET OF AROUND THE WORLD

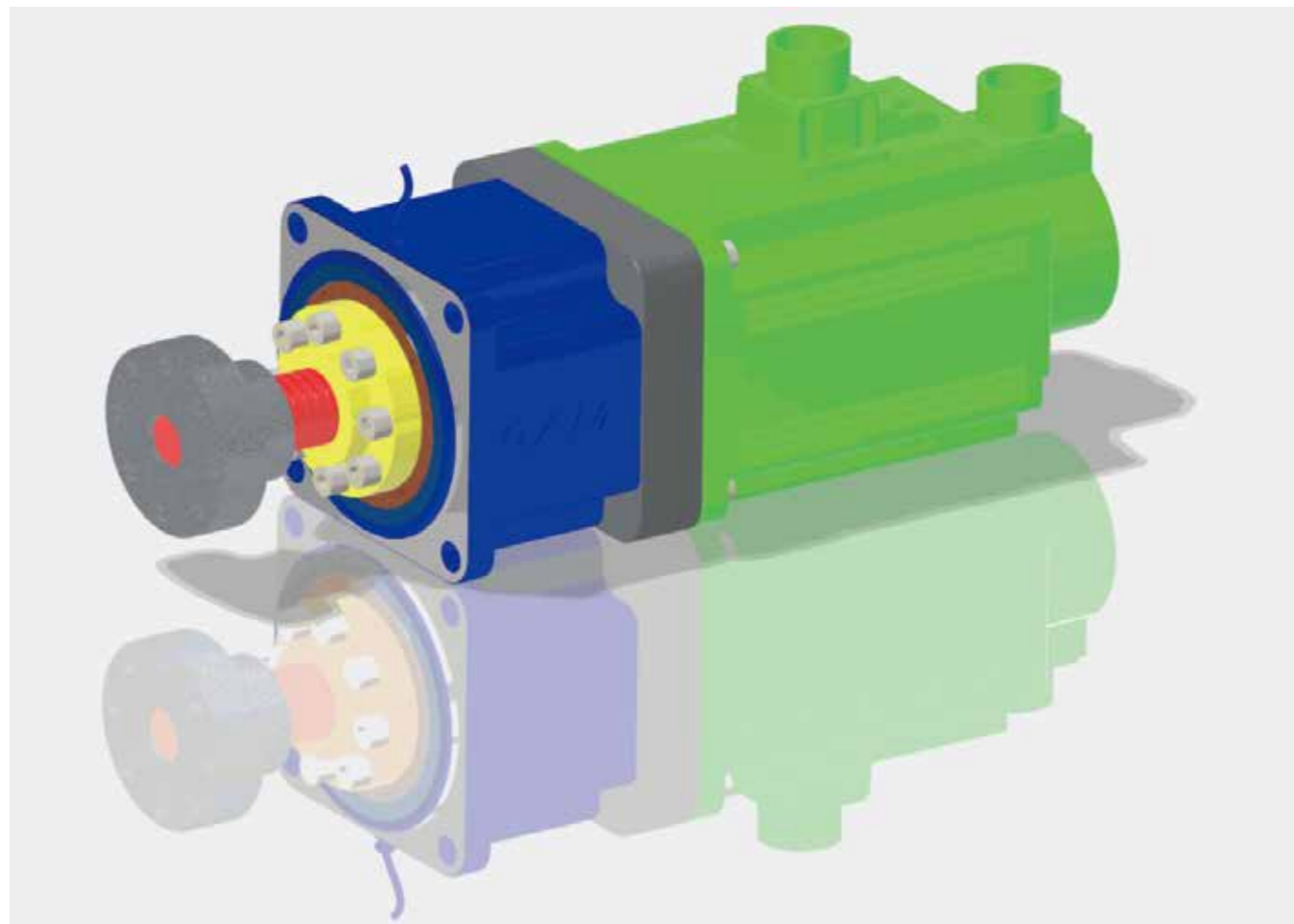


销售地点  
Point of Purchase



## SERVO ELECTRIC CYLINDER

伺服行星一体电缸



### 结构特点 STRUCTURAL CHARACTERISTICS

伺服行星一体电缸是集成伺服电机加行星减速机并内置压力传感器的一款机电一体化产品，通过电机正反旋转运动传动丝杠和丝杠副的机械运动转换为往返直线运动。利用伺服电机的闭环控制特性，可以很方便的实现对推力、速度和位置的精密控制；利用现代运动控制技术、数控技术及总线（网络）技术，实现程序化、总线（网络）化控制。由于其控制、使用的方便性，将实现气缸和液压缸传动所不能实现的精密运动控制。

Electric cylinder transforms forward and backward rotation motion of motor into reciprocating linear motion by the movement of lead screw and auxiliary screw. With the closed-loop control characteristics of servo motor, it is very convenient to achieve the precise control of thrust, velocity and position; and with modern motion control technology, numerical control technology and BUS control technology, it is possible to realize program control and BUS control. Due to the convenience of the control and usage of electric cylinder, it could realize the precision motion control which could not be realized by air cylinder and hydraulic cylinder.

注意：

1. 电动缸丝杆不能承受径向载荷，以免损坏电动缸。
2. 电动缸为精密传动设备，请不要用在有强力冲击的工况。
3. 选型时，请根据负载工况和设计寿命，加入安全系数。

Notice:

1. The piston rod of the electric cylinder cannot bear radial load, so as not to damage the electric cylinder.
2. The electric cylinder is a precision transmission device, please do not use it in the working condition with strong impact.
3. When selecting a model, please add a safety factor according to the load conditions and design life.



DY130

M1

R10

C1

2.3Kw

a

b

c

d

e

a.电缸型号 Electric cylinder

DY80、DY100、DY130、DY180、  
DY220、DY265、DY290

d.输出连接方式 Output connection mode

- C1: 外螺纹
- C2: 法兰盘
- C3: U型插销

b.安装方式 Installation

- M1: 前输出法兰
- M2: 卧式底座
- M4: 后法兰耳轴

e.电机功率 Motor power

0.5KW 1KW 2.3KW 5.5KW  
10KW 15KW 22KW

c.丝杆导程 Lead screw guide

R5、R6、R8、R10、R12、R16、  
R20、R25、R40

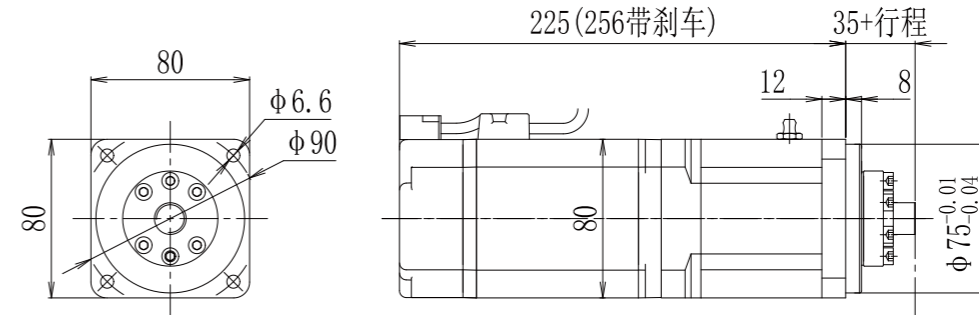
注：1、根据客户需求，丝杆精度分：C1、C3、C7精度，在订货询价时请与业务员说明  
2、伺服电机可选带刹车和不带刹车，编码器主要配多摩川23位绝对值  
3、伺服驱动器可选脉冲型或EtherCAT总线型，也可适配其它品牌驱动器

### DY80伺服行星一体电缸选型参数表

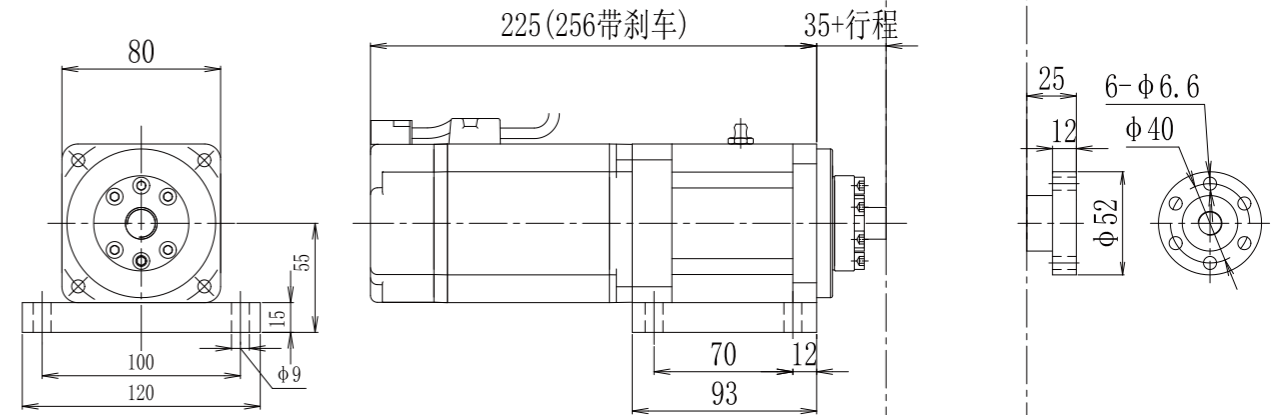
### DY 80 Servo Planetary Integrated Cylinder Selection Parameter Table

型号 Model	DY80-M1-(R5)-(C1)			
电机功率 Motor power	0.5Kw			
电机扭矩 Motor torque	3.2N.m			
电机电压 Motor voltage	220V			
电机转速 Motor speed	1500r/min			
编码器 Encoder	17位\23位绝对值 absolute 17bits 23bits			
驱动器 Driver	EtherCAT总线/脉冲(选配) EtherCAT BUS/Pulse(Optional)			
减速比 Ratio	1:3.5			
定位精度 Positioning accuracy	±0.01			
导程 Lead	5	10	16	20
承受推力 Withstand thrust	6KN	6KN	6KN	6KN
额定推力 Rated thrust	12KN	6KN	3.8KN	3KN
输出速度 Output speed	35mm/s	71mm/s	114mm/s	142mm/s
输出行程 Output stroke	0~150mm	0~150mm	0~150mm	0~150mm
压力传感器 Pressure transducer	选配 Optional			

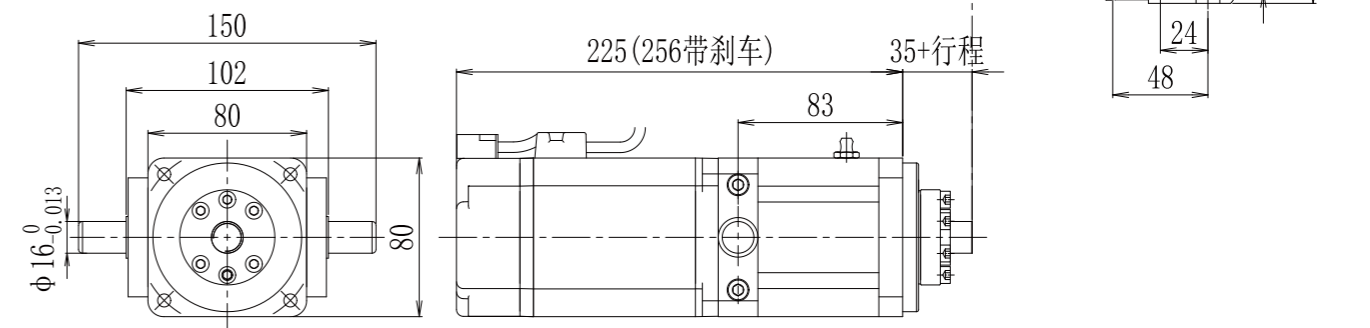
#### M1前法兰安装



#### M2卧式安装



#### M4双耳轴安装

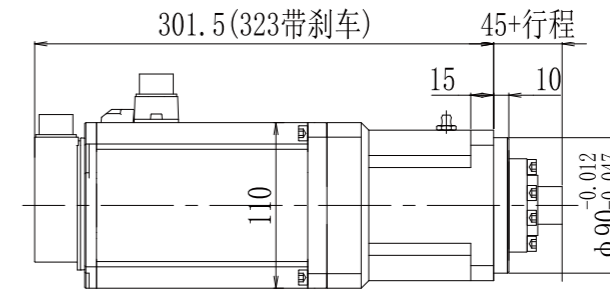
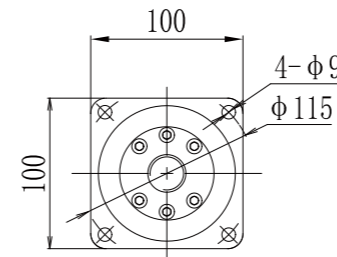


# DY100伺服行星一体电缸选型参数表

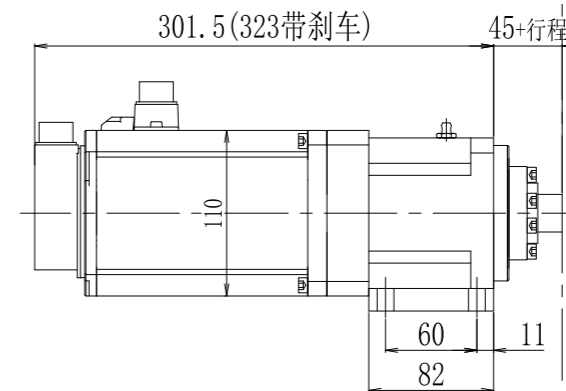
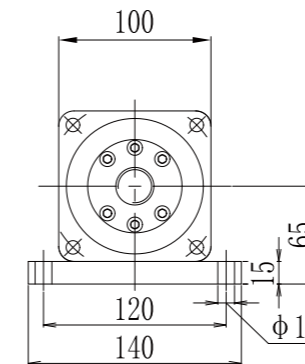
## DY 100 Servo Planetary Integrated Cylinder Selection Parameter Table

型号 Model	DY100-M1-(R6)-(C1)			
电机功率 Motor power	1Kw			
电机扭矩 Motor torque	6.37N.m			
电机电压 Motor voltage	220V			
电机转速 Motor speed	1500r/min			
编码器 Encoder	17位\23位绝对值 absolute 17bits 23bits			
驱动器 Driver	EtherCAT总线/脉冲(选配) EtherCAT BUS/Pulse(Optional)			
减速比 Ratio	1:3			
定位精度 Positioning accuracy	±0.01			
导程 Lead	5	10	16	20
承受推力 Withstand thrust	15KN	15KN	15KN	15KN
额定推力 Rated thrust	20KN	10KN	6.4KN	5KN
输出速度 Output speed	41mm/s	83mm/s	133mm/s	166mm/s
输出行程 Output stroke	0~160mm	0~160mm	0~160mm	0~160mm
压力传感器 Pressure transducer	选配 Optional			

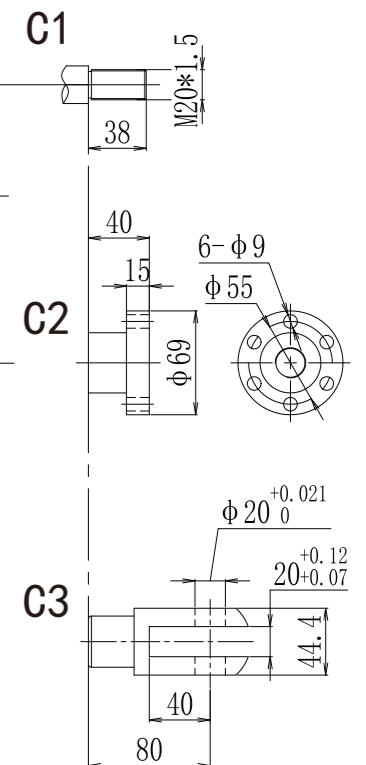
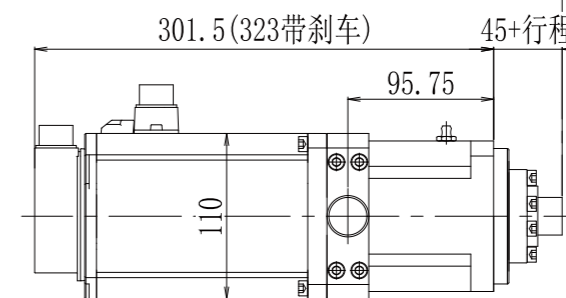
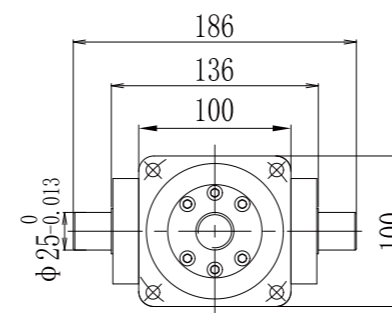
### M1前法兰安装



### M2卧式安装



### M4双耳轴安装

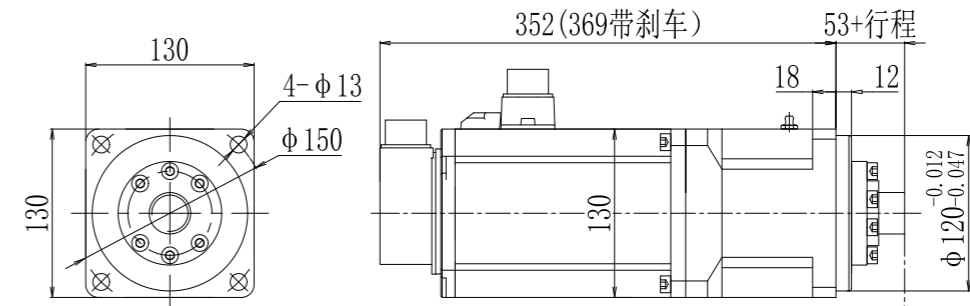


## DY130伺服行星一体电缸选型参数表

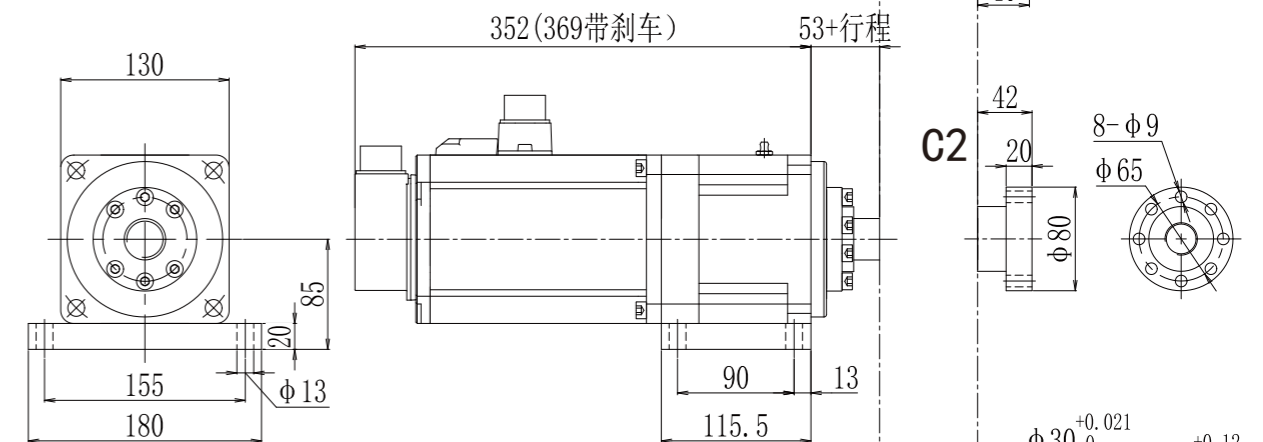
### DY130 Servo Planetary Integrated Cylinder Selection Parameter Table

型号 Model	DY130-M1-(8)-(C1)			
电机功率 Motor power	2.3Kw			
电机扭矩 Motor torque	14.6N.m			
电机电压 Motor voltage	220V			
电机转速 Motor speed	1500r/min			
编码器 Encoder	17位\23位绝对值 absolute 17bits 23bits			
驱动器 Driver	EtherCAT总线/脉冲(选配) EtherCAT BUS/Pulse(Optional)			
减速比 Ratio	1:3			
定位精度 Positioning accuracy	±0.01			
导程 Lead	8	10	16	20
承受推力 Withstand thrust	30KN	30KN	30KN	30KN
额定推力 Rated thrust	29KN	23.5KN	14.6KN	11.7KN
输出速度 Output speed	66mm/s	83mm/s	133mm/s	166mm/s
输出行程 Output stroke	0~200mm	0~200mm	0~200mm	0~200mm
压力传感器 Pressure transducer	选配 Optional			

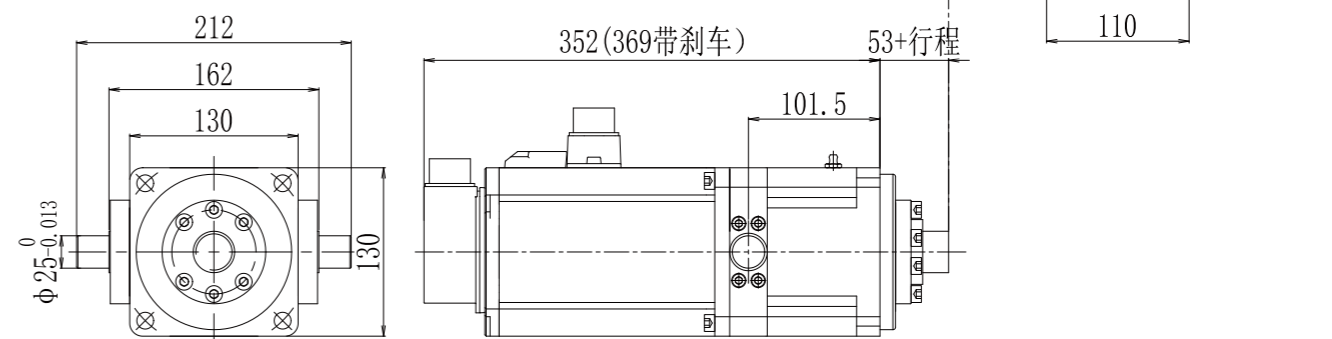
#### M1前法兰安装



#### M2卧式安装



#### M4双耳轴安装

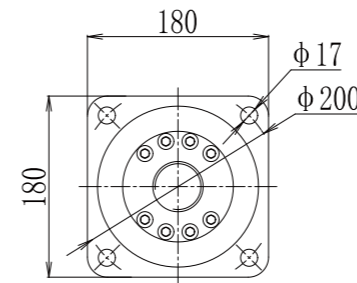


### DY180伺服行星一体电缸选型参数表

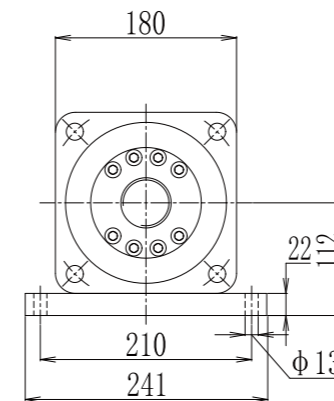
### DY180 Servo Planetary Integrated Cylinder Selection Parameter Table

型号 Model	DY180-M1-(10)-(C1)			
电机功率 Motor power	5.5Kw			
电机扭矩 Motor torque	35N.m			
电机电压 Motor voltage	380V			
电机转速 Motor speed	1500r/min			
编码器 Encoder	17位\23位绝对值 absolute 17bits 23bits			
驱动器 Driver	EtherCAT总线/脉冲(选配) EtherCAT BUS/Pulse(Optional)			
减速比 Ratio	1:3			
定位精度 Positioning accuracy	±0.01			
导程 Lead	10	12	16	20
承受推力 Withstand thrust	70KN	70KN	70KN	70KN
额定推力 Rated thrust	56KN	46KN	35KN	28KN
输出速度 Output speed	83mm/s	100mm/s	133mm/s	166mm/s
输出行程 Output stroke	0~250mm	0~250mm	0~250mm	0~250mm
压力传感器 Pressure transducer	选配 Optional			

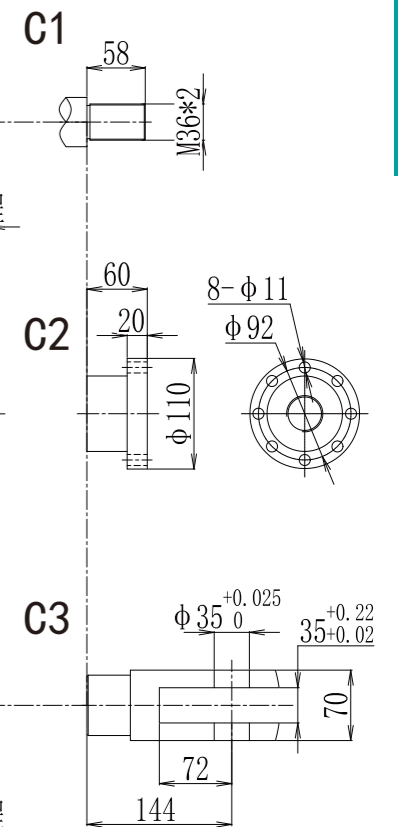
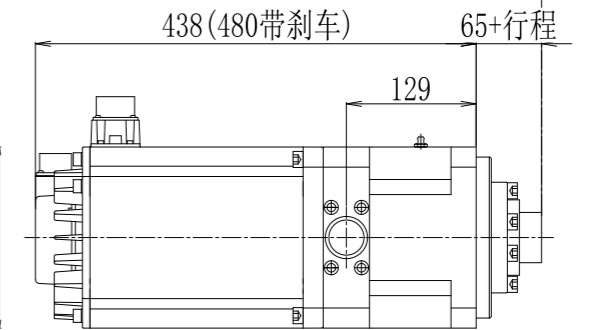
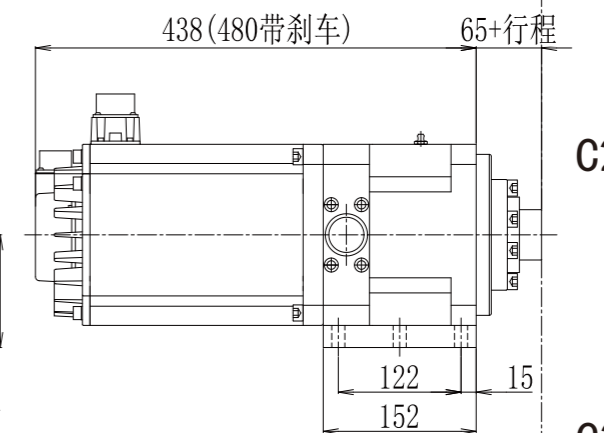
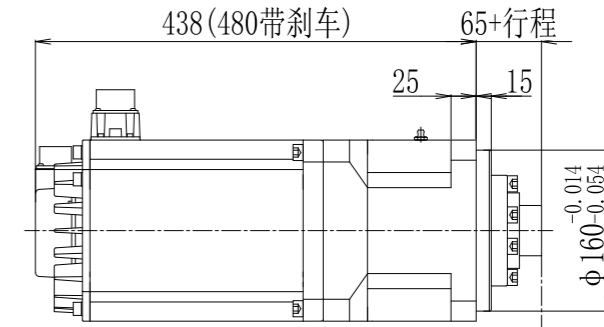
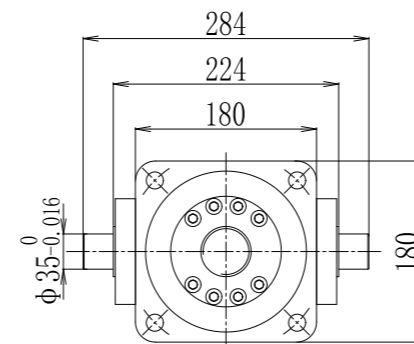
#### M1前法兰安装



#### M2卧式安装



#### M4双耳轴安装

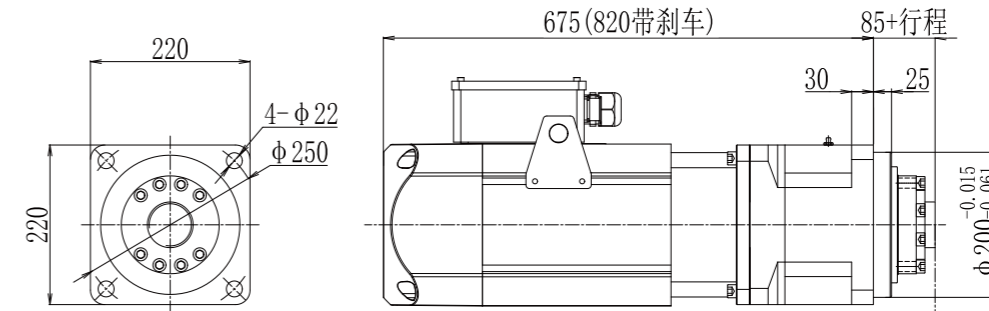


## DY220伺服行星一体电缸选型参数表

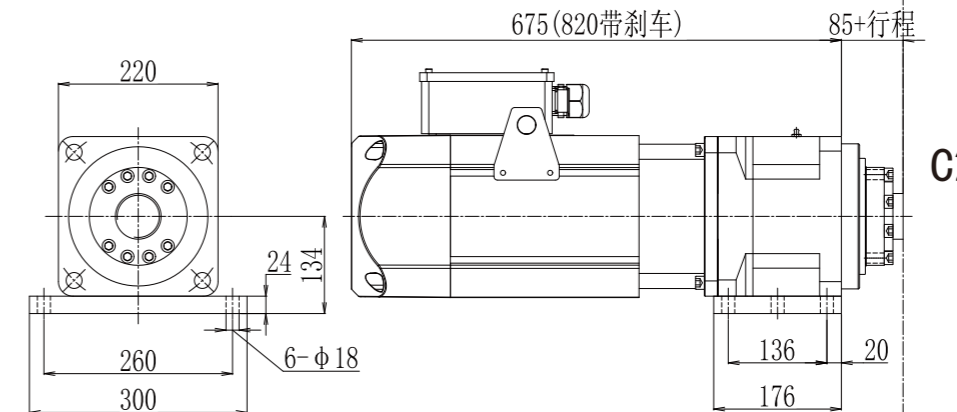
### DY220 Servo Planetary Integrated Cylinder Selection Parameter Table

型号 Model	DY220-M1-(10)-(C1)			
电机功率 Motor power	10Kw			
电机扭矩 Motor torque	95.4N.m			
电机电压 Motor voltage	380V			
电机转速 Motor speed	1000r/min			
编码器 Encoder	17位\23位绝对值 absolute 17bits 23bits			
驱动器 Driver	EtherCAT总线/脉冲(选配) EtherCAT BUS/Pulse(Optional)			
减速比 Ratio	1:3			
定位精度 Positioning accuracy	±0.01			
导程 Lead	10	12	16	20
承受推力 Withstand thrust	150KN	150KN	150KN	150KN
额定推力 Rated thrust	152KN	127KN	95KN	76KN
输出速度 Output speed	55mm/s	66mm/s	88mm/s	111mm/s
输出行程 Output stroke	0~350mm	0~350mm	0~350mm	0~350mm
压力传感器 Pressure transducer	选配 Optional			

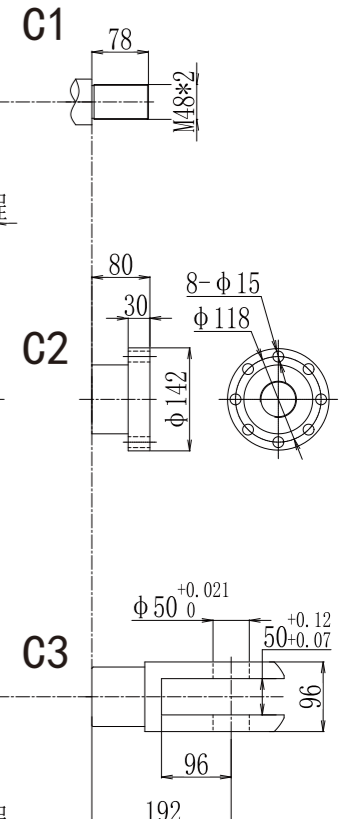
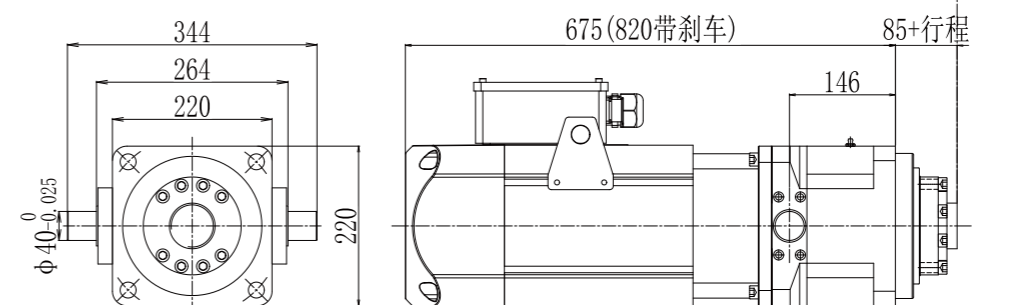
#### M1前法兰安装



#### M2卧式安装



#### M4双耳轴安装

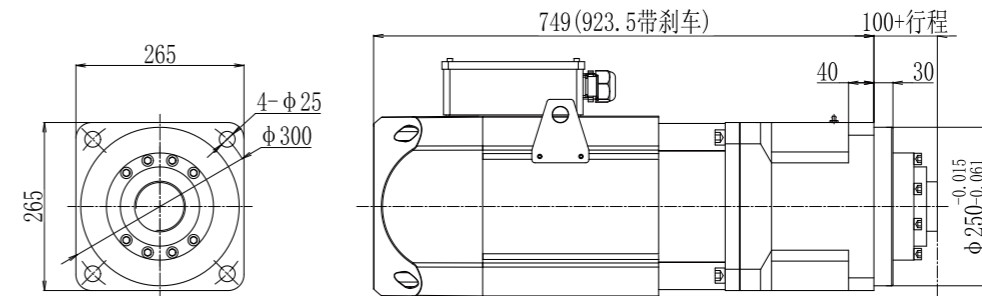


## DY265伺服行星一体电缸选型参数表

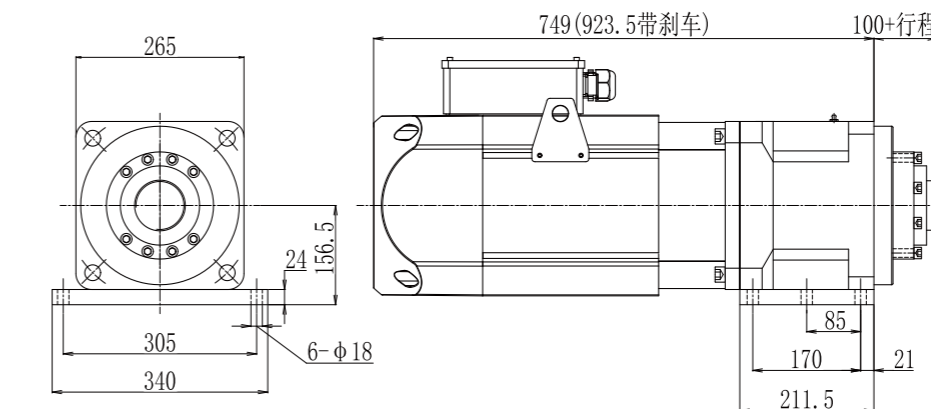
### DY265 Servo Planetary Integrated Cylinder Selection Parameter Table

型号 Model	DY265-M1-(10)-(C1)			
电机功率 Motor power	15Kw			
电机扭矩 Motor torque	140N.m			
电机电压 Motor voltage	380V			
电机转速 Motor speed	1000r/min			
编码器 Encoder	17位\23位绝对值 absolute 17bits 23bits			
驱动器 Driver	EtherCAT总线/脉冲(选配) EtherCAT BUS/Pulse(Optional)			
减速比 Ratio	1:3			
定位精度 Positioning accuracy	±0.01			
导程 Lead	10	12	16	20
承受推力 Withstand thrust	250KN	250KN	250KN	250KN
额定推力 Rated thrust	224KN	187KN	140KN	112KN
输出速度 Output speed	55mm/s	66mm/s	88mm/s	111mm/s
输出行程 Output stroke	0~350mm	0~350mm	0~350mm	0~350mm
压力传感器 Pressure transducer	选配 Optional			

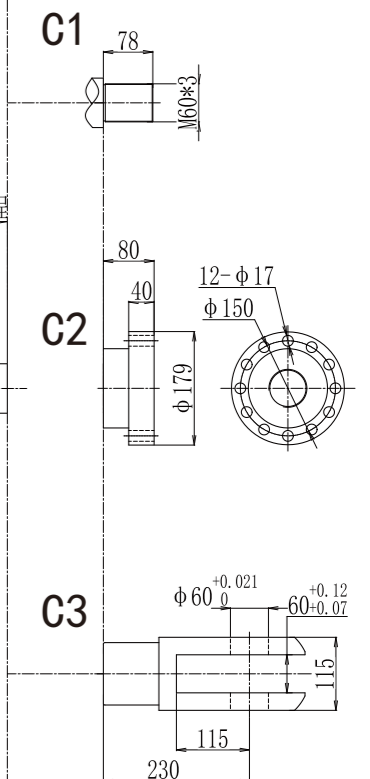
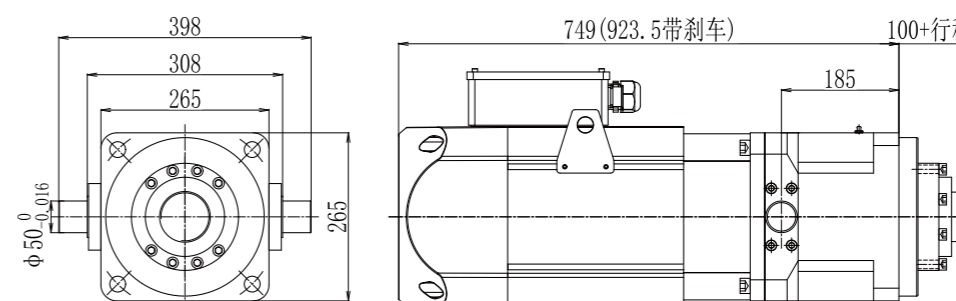
#### M1前法兰安装



#### M2卧式安装



#### M4双耳轴安装

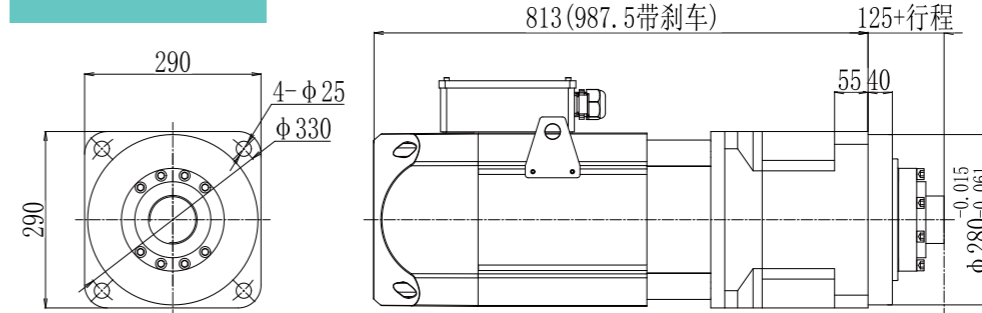


# DY290伺服行星一体电缸选型参数表

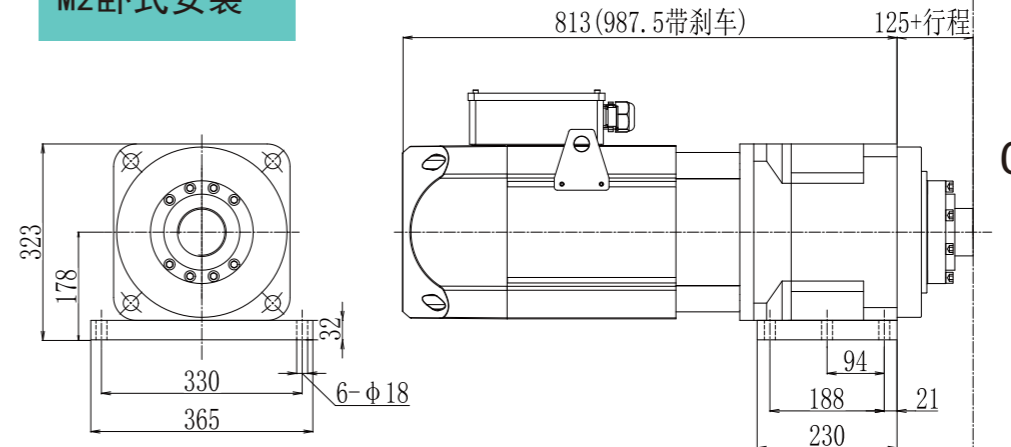
## DY290 Servo Planetary Integrated Cylinder Selection Parameter Table

型号 Model	DY290-M1-(10)-(C1)			
电机功率 Motor power	22Kw			
电机扭矩 Motor torque	210N.m			
电机电压 Motor voltage	380V			
电机转速 Motor speed	1000r/min			
编码器 Encoder	17位\23位绝对值 absolute 17bits 23bits			
驱动器 Driver	EtherCAT总线/脉冲(选配) EtherCAT BUS/Pulse(Optional)			
减速比 Ratio	1:3.5			
定位精度 Positioning accuracy	±0.01			
导程 Lead	10	12	16	20
承受推力 Withstand thrust	500KN	500KN	500KN	500KN
额定推力 Rated thrust	400KN	320KN	245KN	196KN
输出速度 Output speed	55mm/s	66mm/s	88mm/s	111mm/s
输出行程 Output stroke	0~400mm	0~400mm	0~400mm	0~400mm
压力传感器 Pressure transducer	选配 Optional			

### M1前法兰安装



### M2卧式安装



### M4双耳轴安装

